



Fuite paraprothétique: quelle prothèse pour quelle fuite?

Sébastien Hascoët, *Cardiologie pédiatrique et congénitale, Hôpital Marie Lannelongue*

Prothèses disponibles

Prothèses utilisées

Éléments décisionnels

Prothèse « idéale »

Profil

Visibilité

Étanchéité

Stabilité

Tolérance

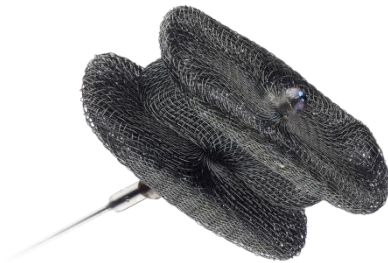
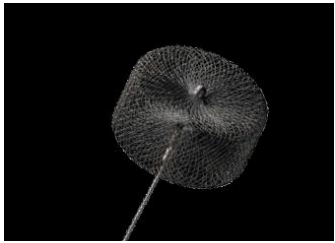
Validée

Remboursée

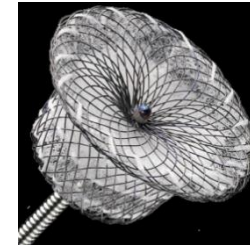


Panorama prothèse

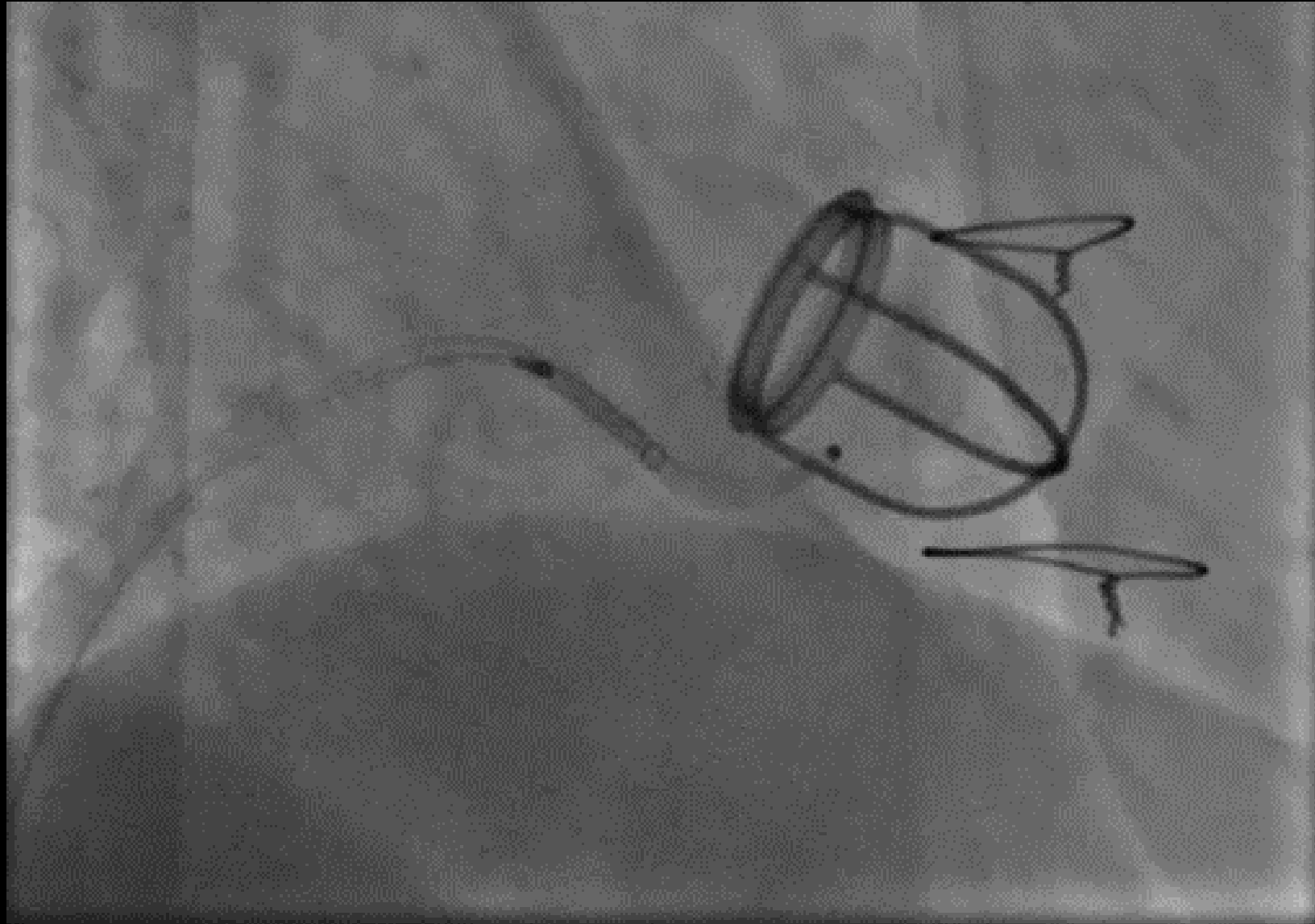
Vascular Plug



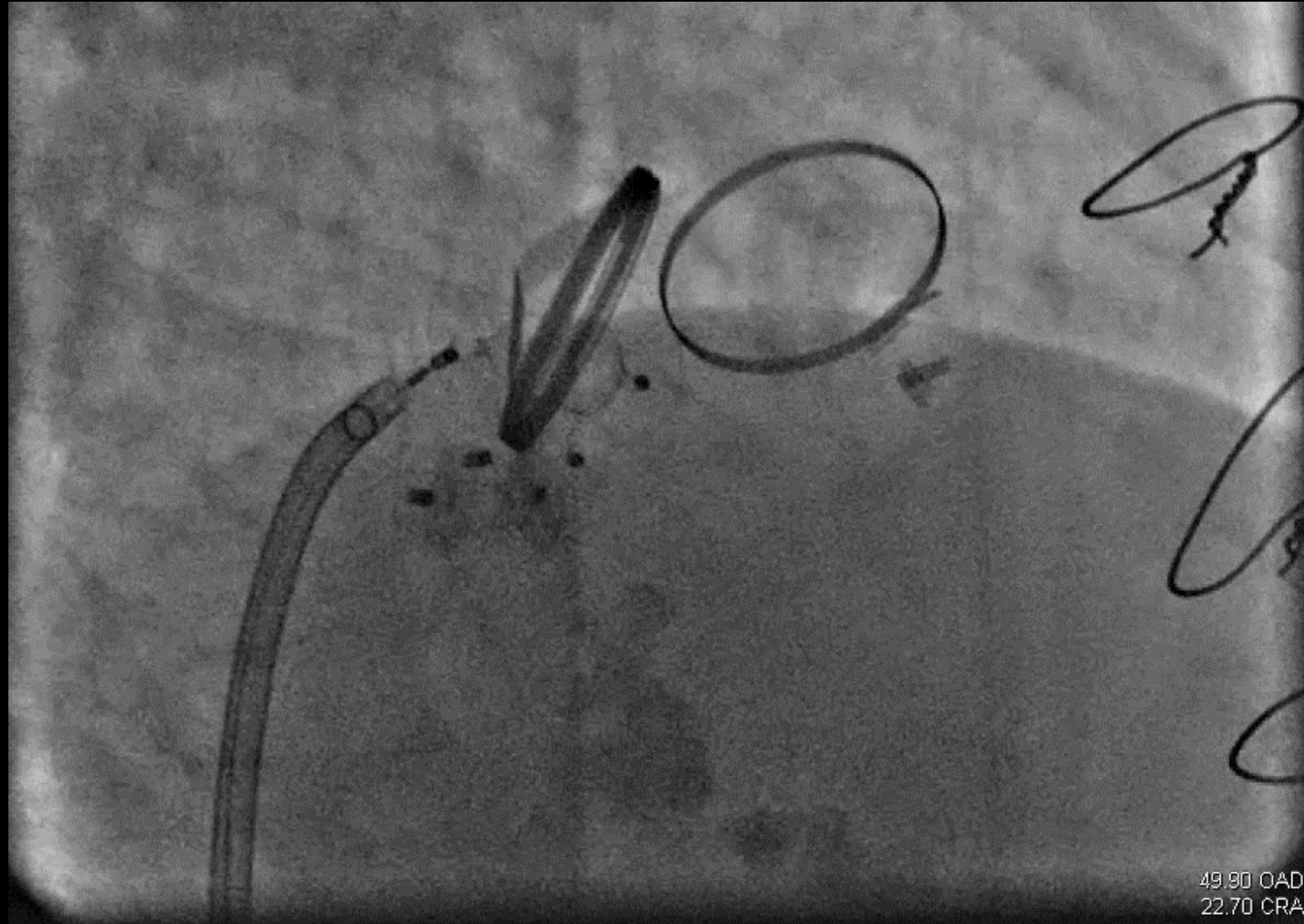
occluder



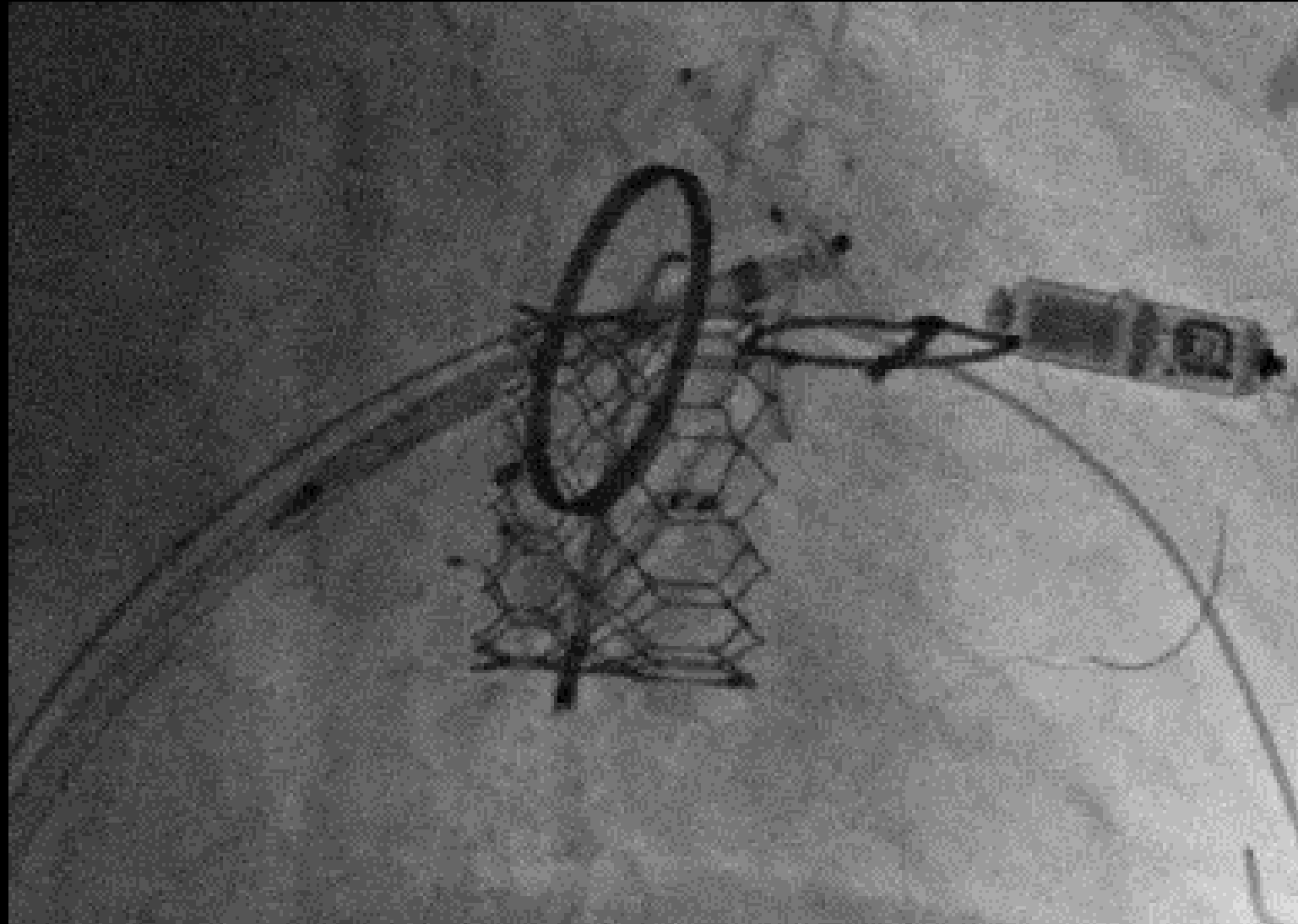
VP2



VP2 x 2 + VP3

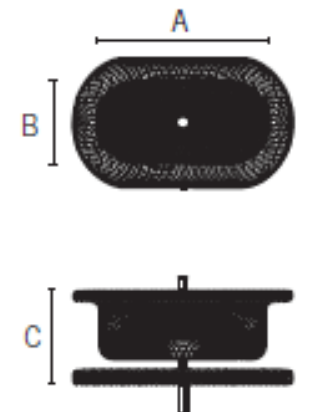
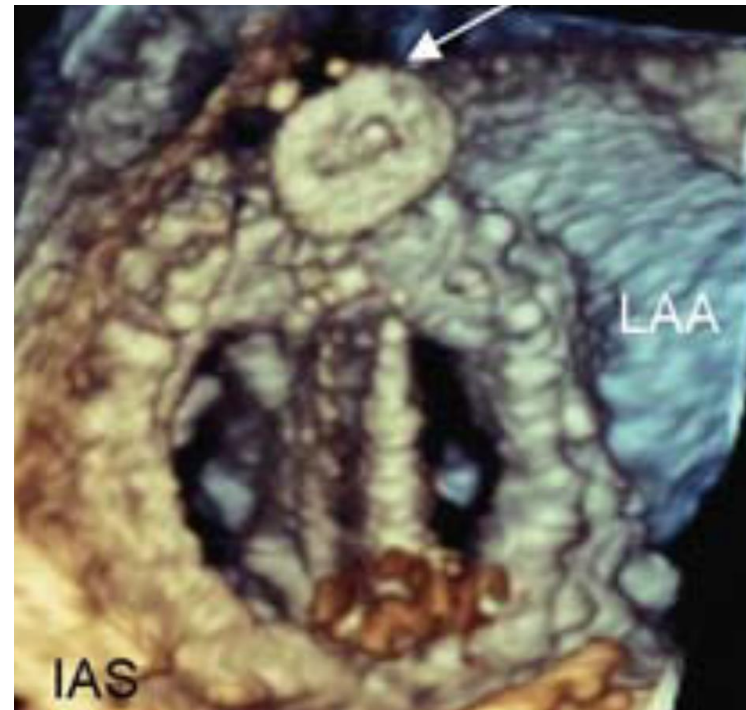
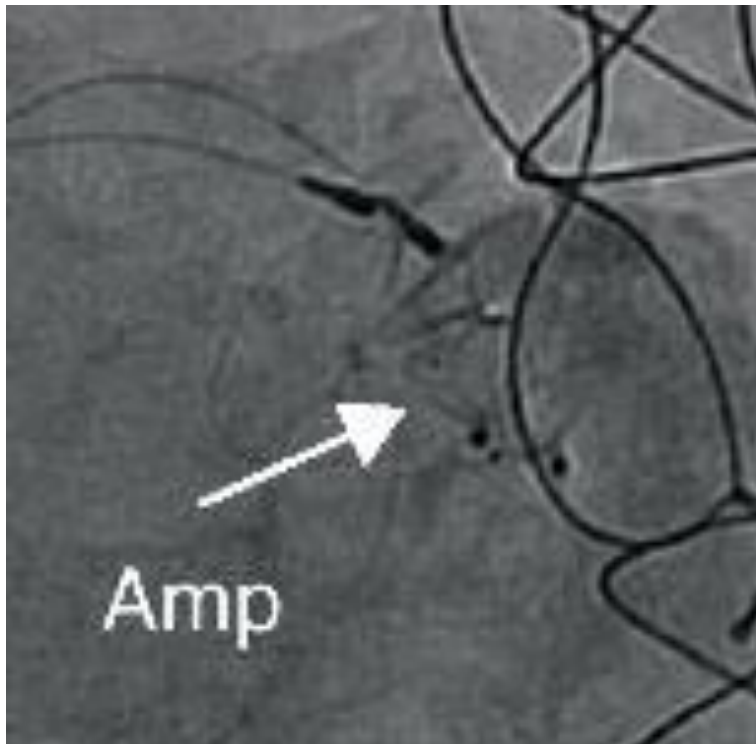


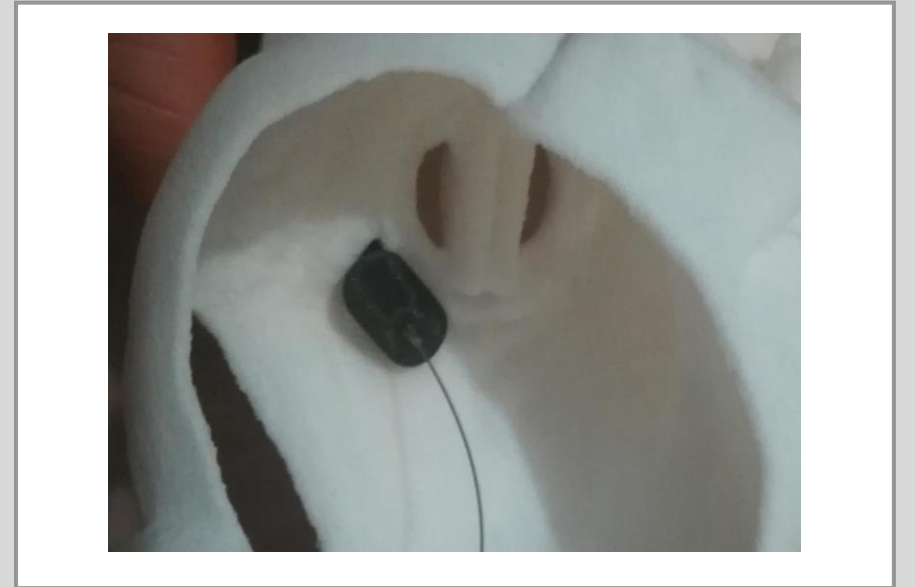
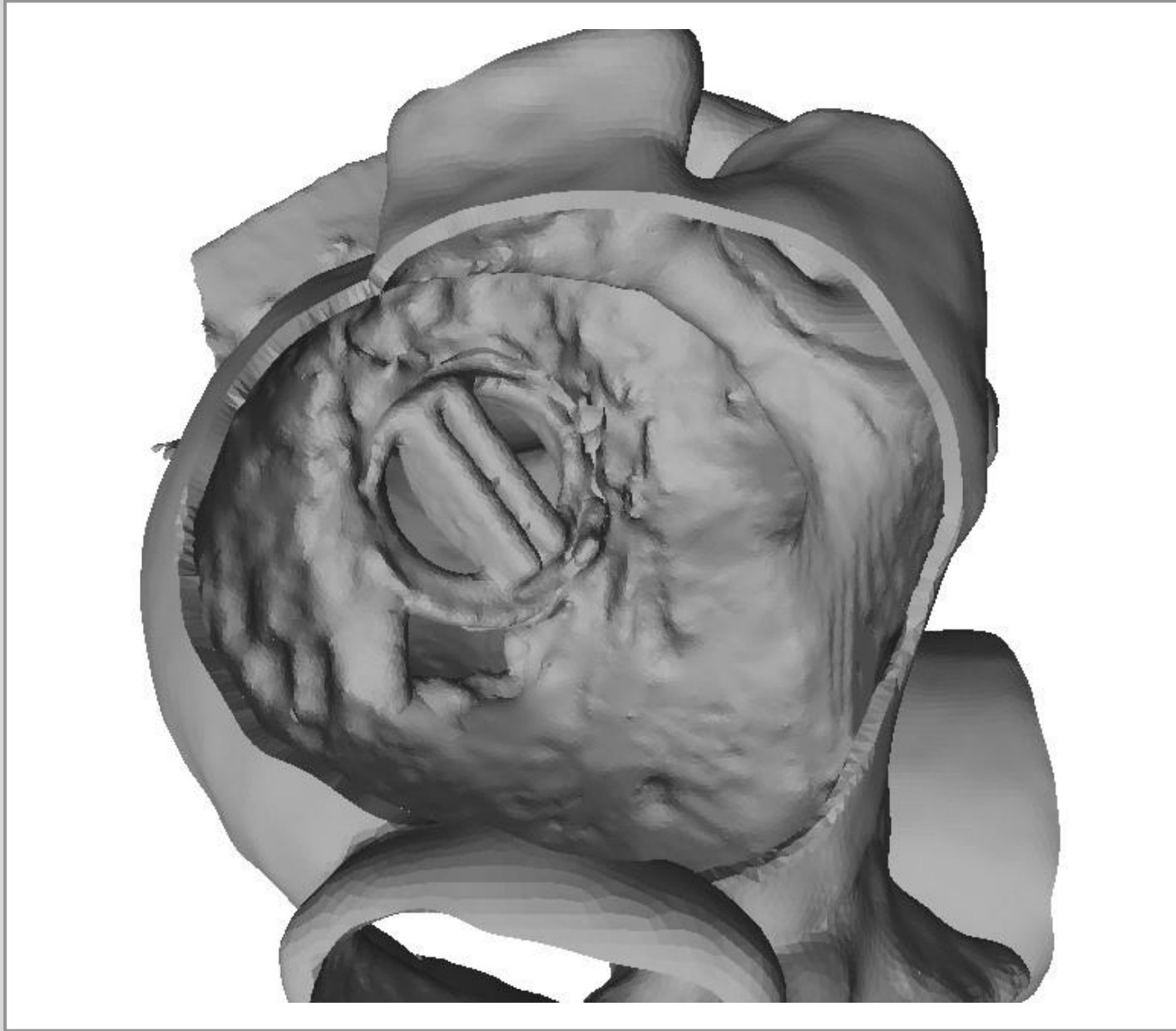
VP2 x 2

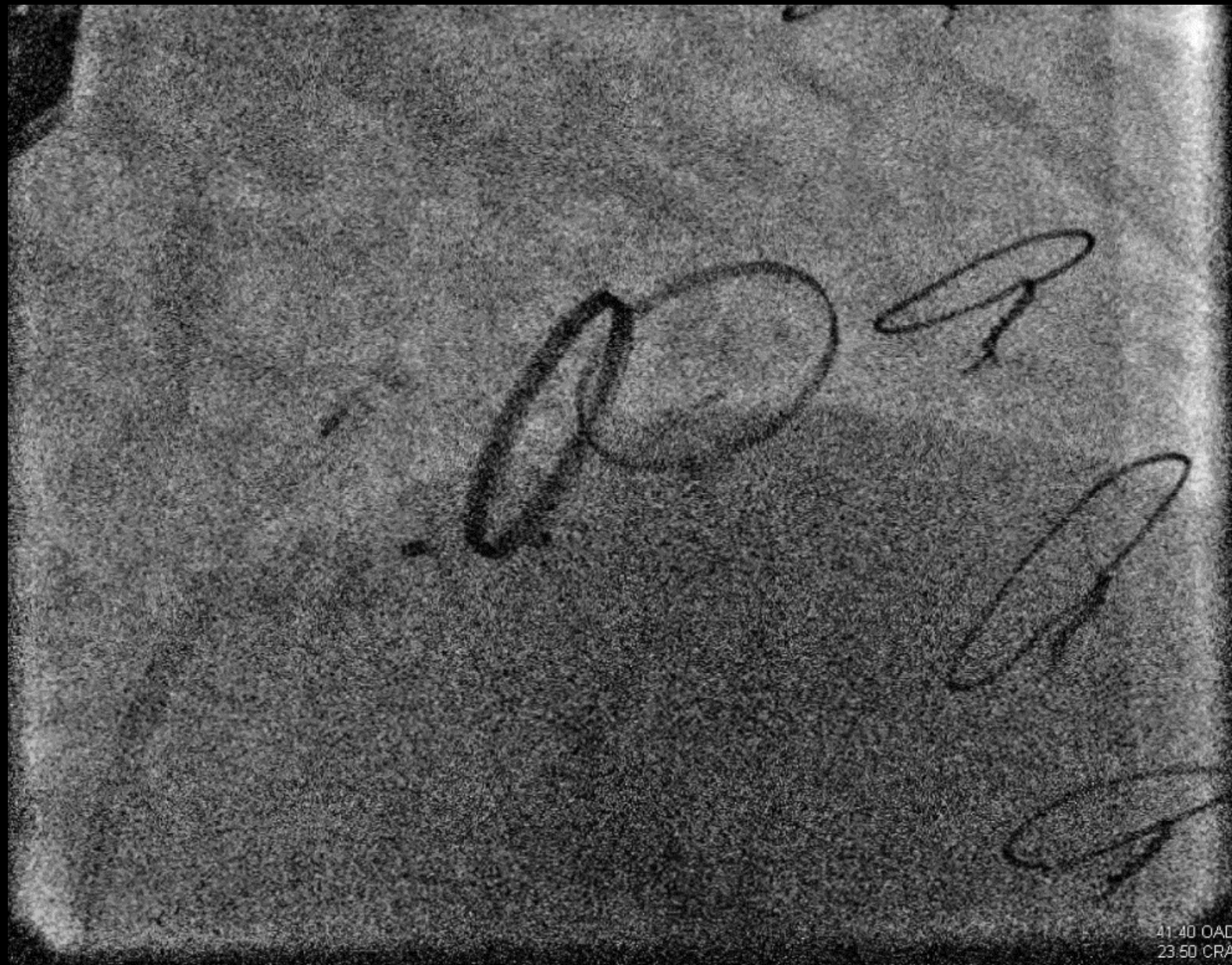


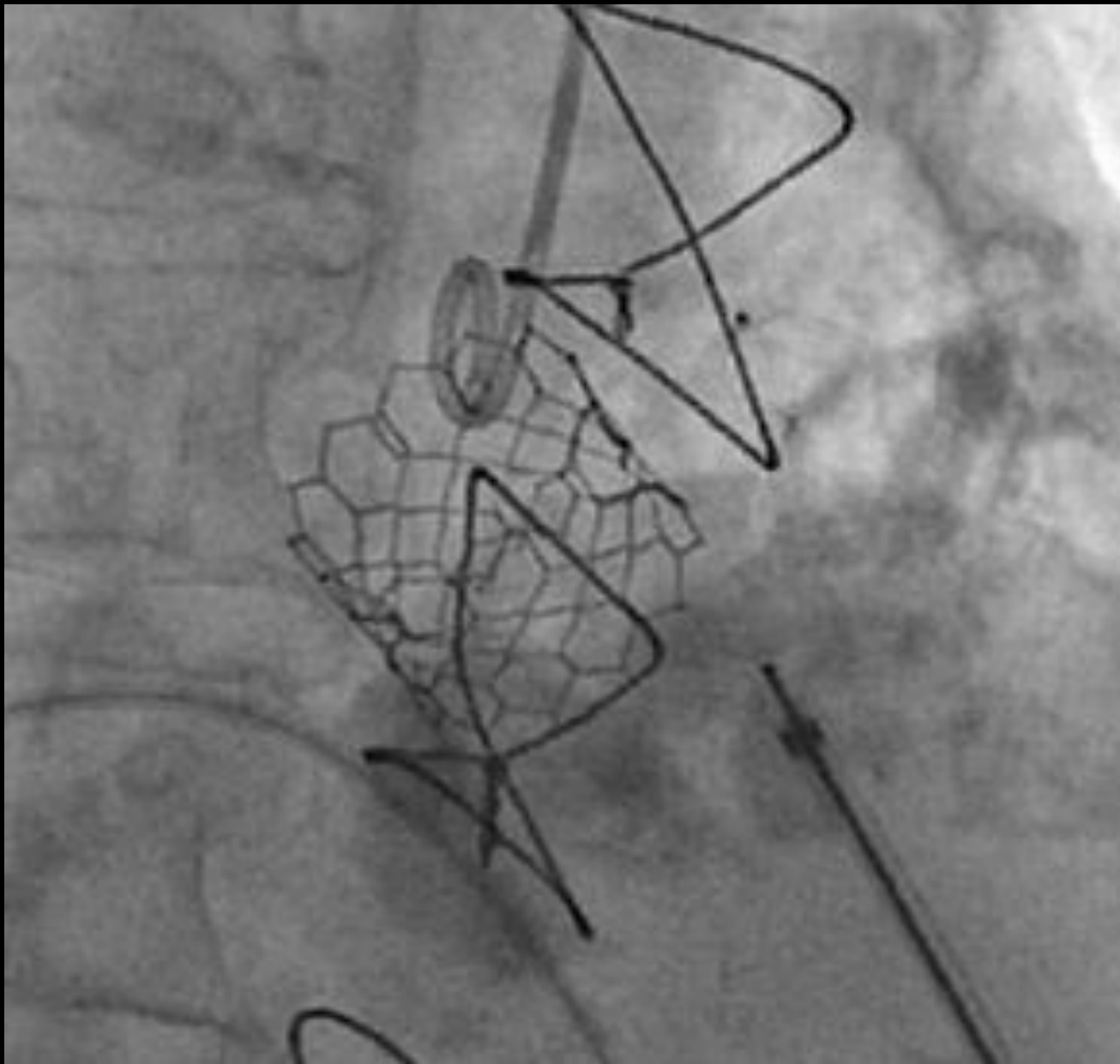
[A] Axe long (mm)	[B] Axe court (mm)	[C] Longueur non contrainte (mm)	Diamètre circulaire comparable (mm)	Systèmes de mise en place requis ²	
				Dimensions requisies pour les introduceurs (F)	Ou Dimensions requisies pour les catheters-guides (F)
4	2	6.5	2.8	4	6
6	3	6.5	4.2	4	6
8	4	6.5	5.7	5	7
10	3	6.5	5.5	5	7
10	5	6.5	7.1	5	7
12	3	6.5	6.0	7	9
12	5	6.5	7.7	7	9
14	3	6.5	6.5	7	9
14	5	6.5	8.4	7	9

VP 3

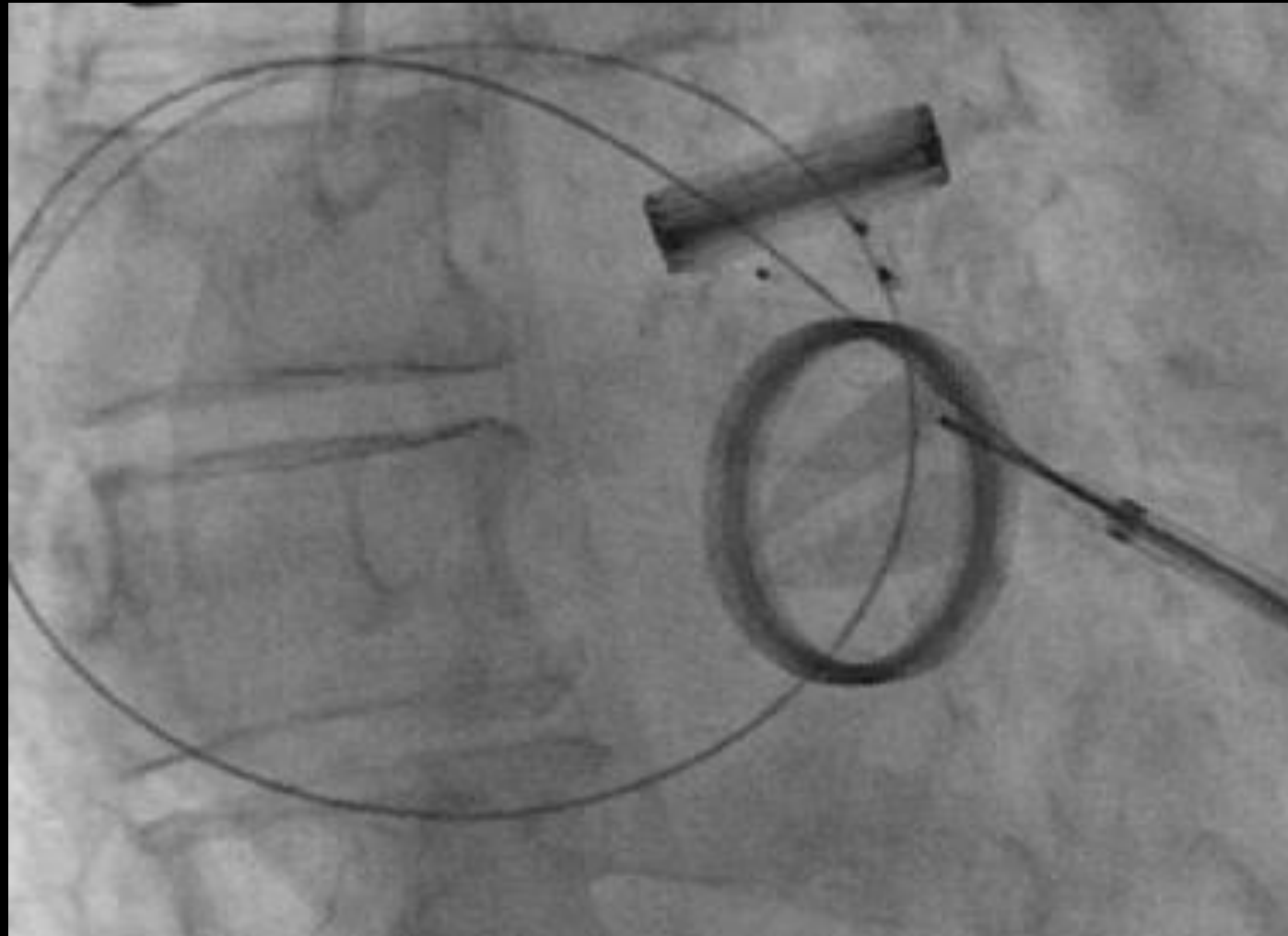




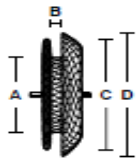




ADO 2



AMPLATZER™ Septal Occluder



CONFIGURATION

A = Waist Diameter (Dia.)
B = Waist Length
C = RA Disc Diameter
D = LA Disc Diameter

Device Size/
Waist Diameter
(mm)

Sheath
Size

Device Critical
Dimensions (mm)

4 to 10

6 F

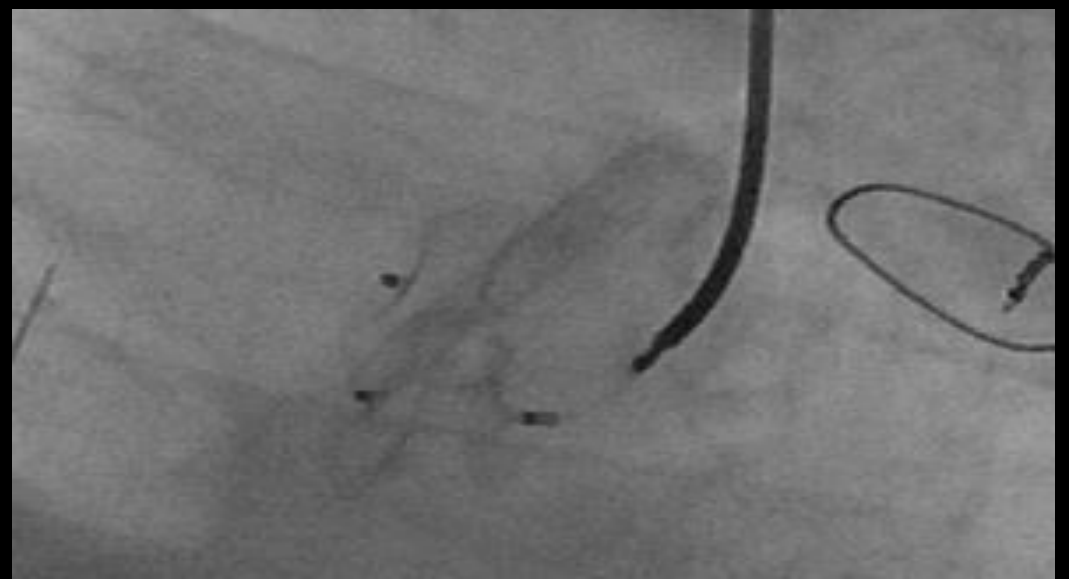
RA Disc Dia. Waist + 8
LA Disc Dia. Waist + 12
Waist Length 3

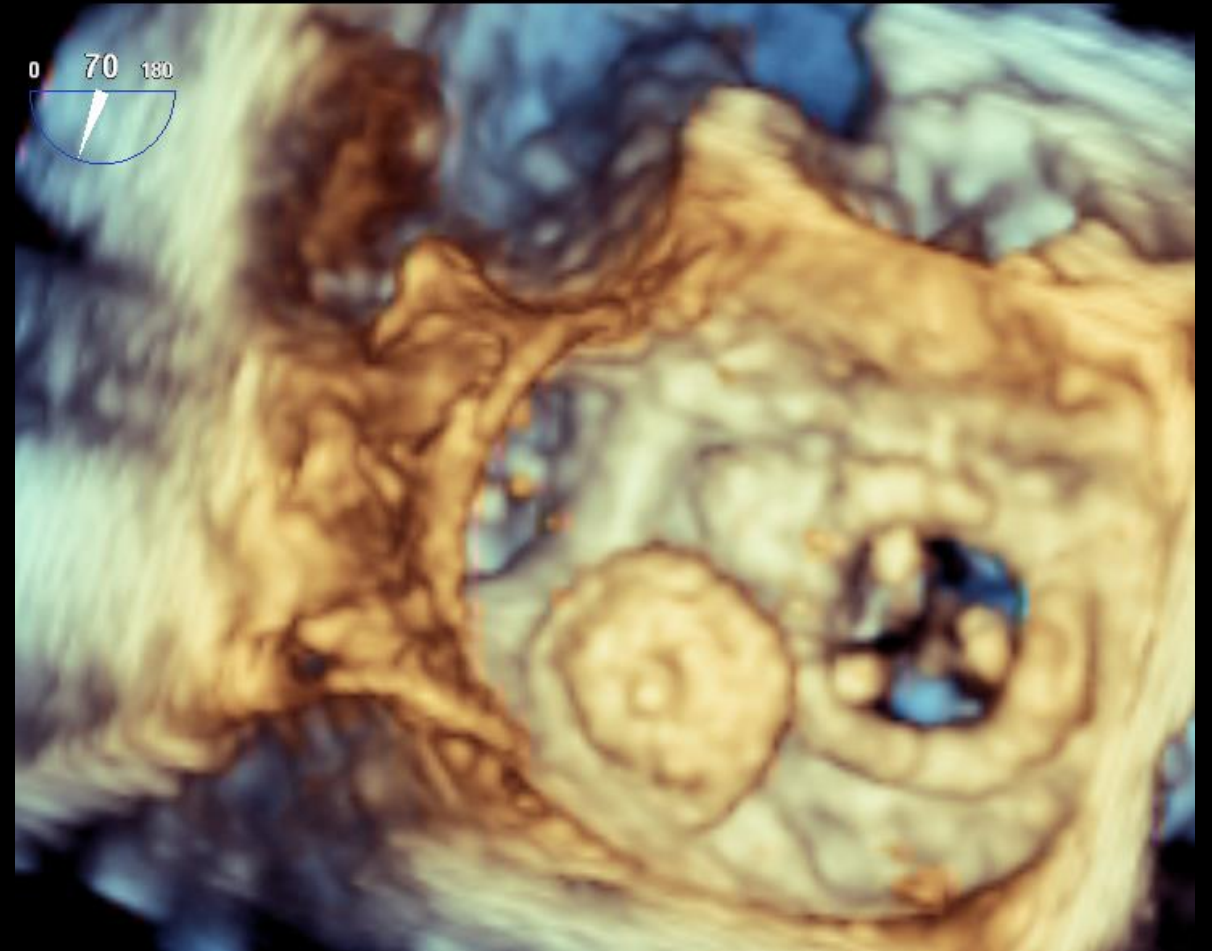
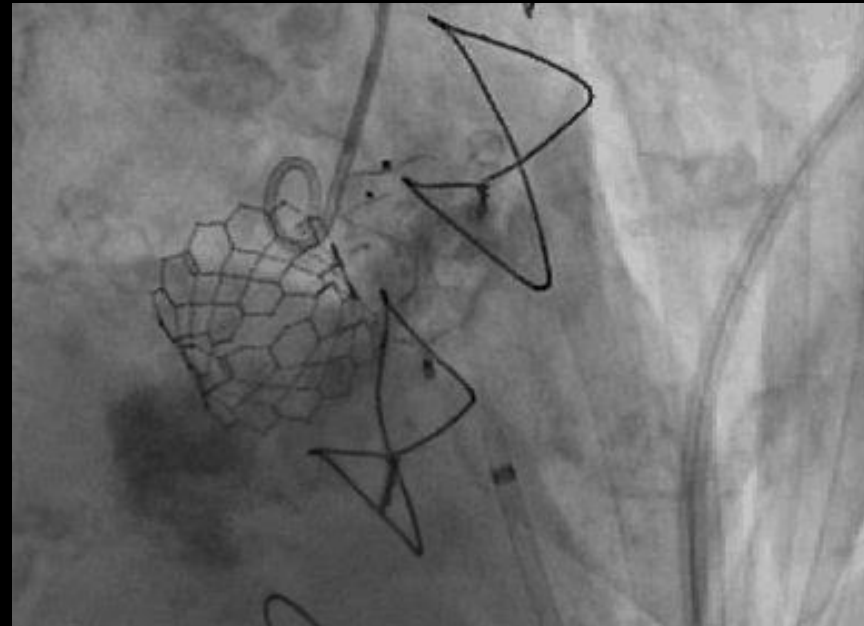
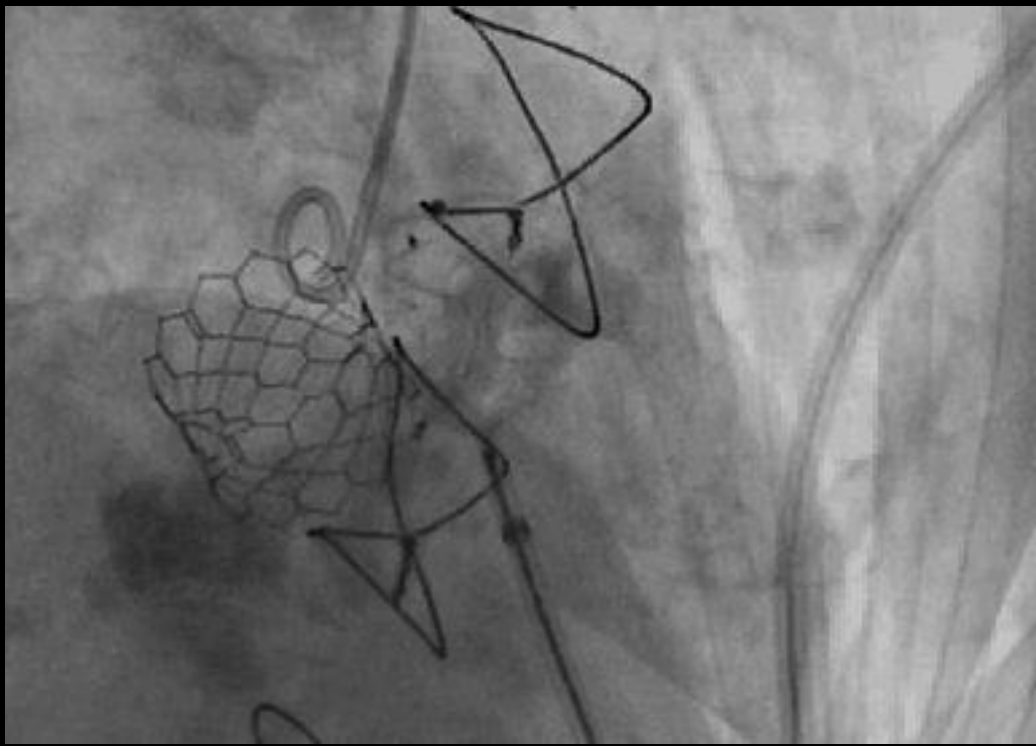
11 to 17

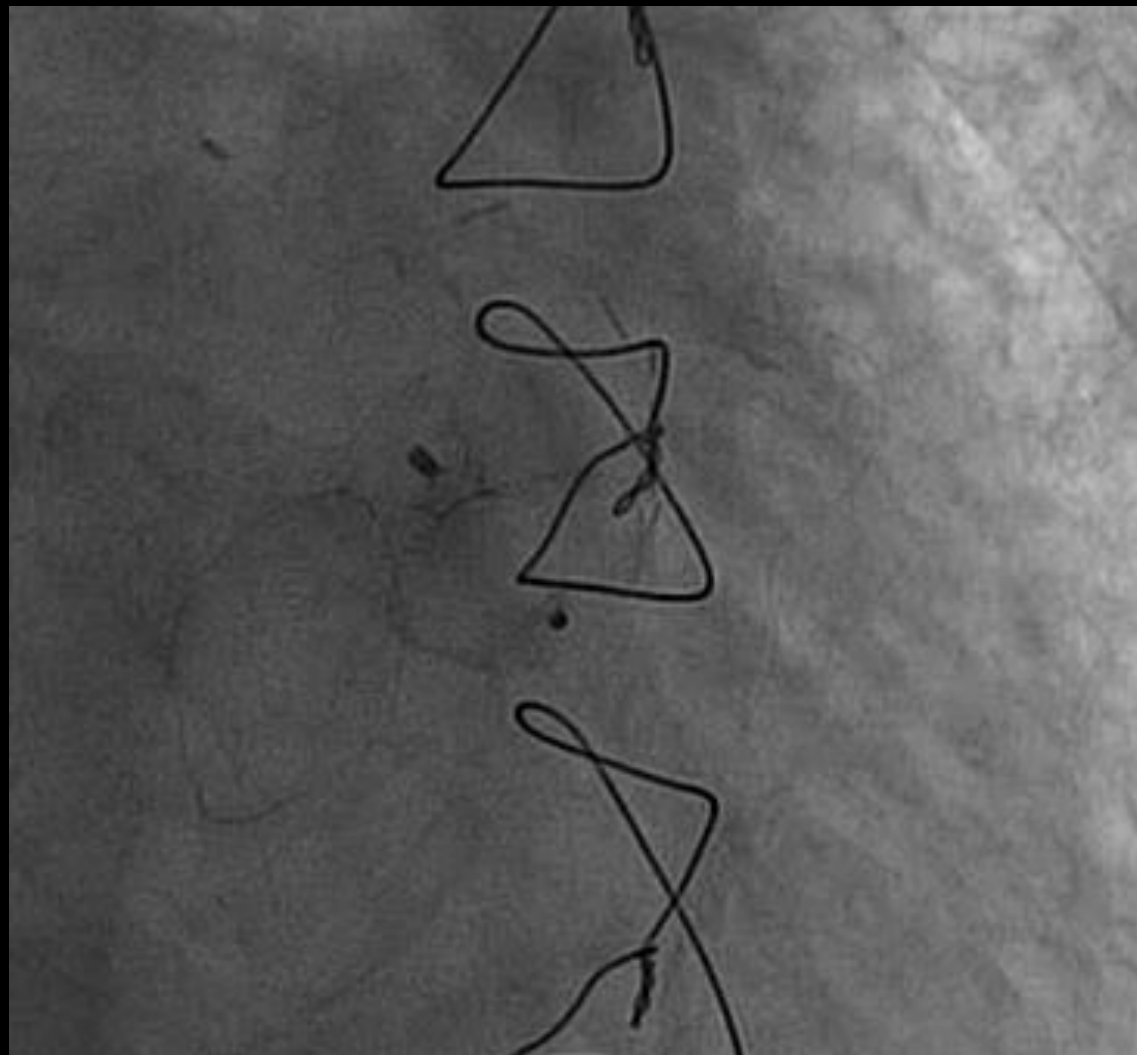
7 F

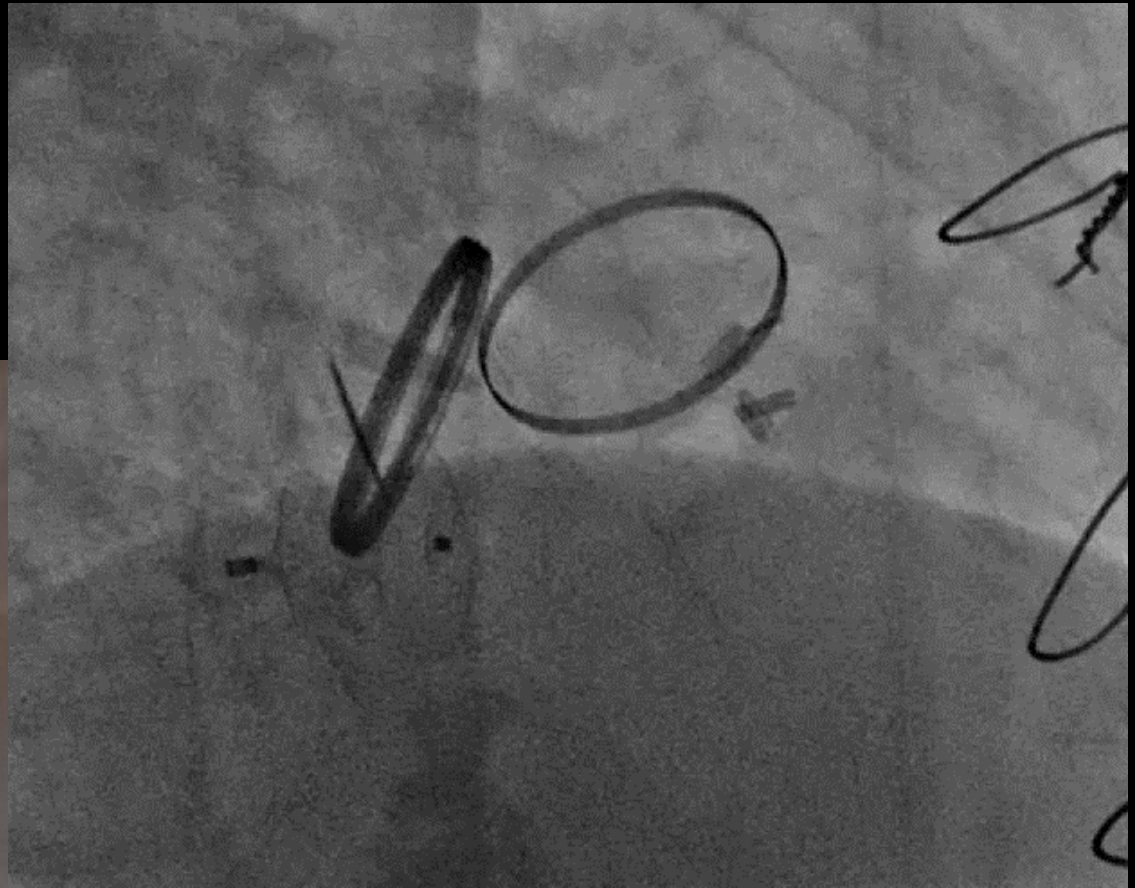
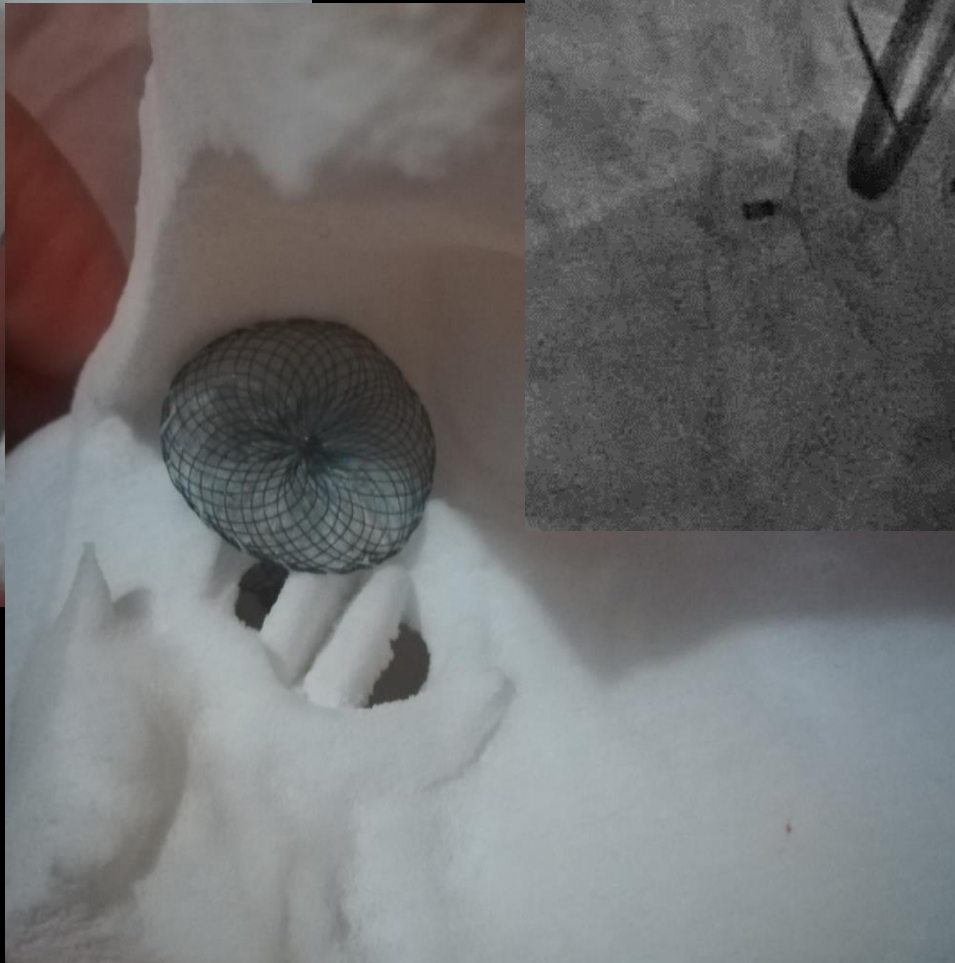
RA Disc Dia. Waist + 10
LA Disc Dia. Waist + 14
Waist Length 4

ASO

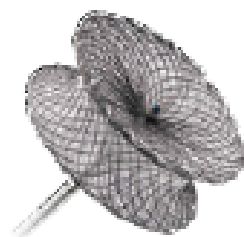








AMPLATZER™ Muscular VSD Occluder



CONFIGURATION

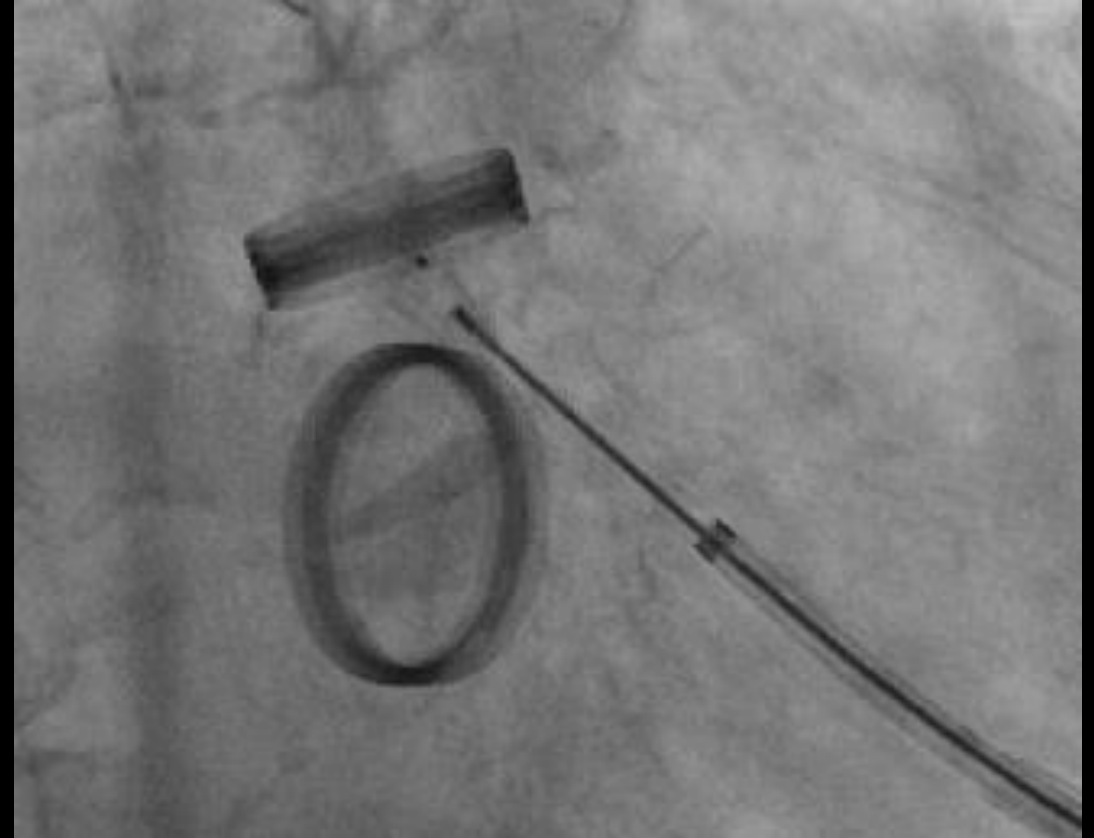
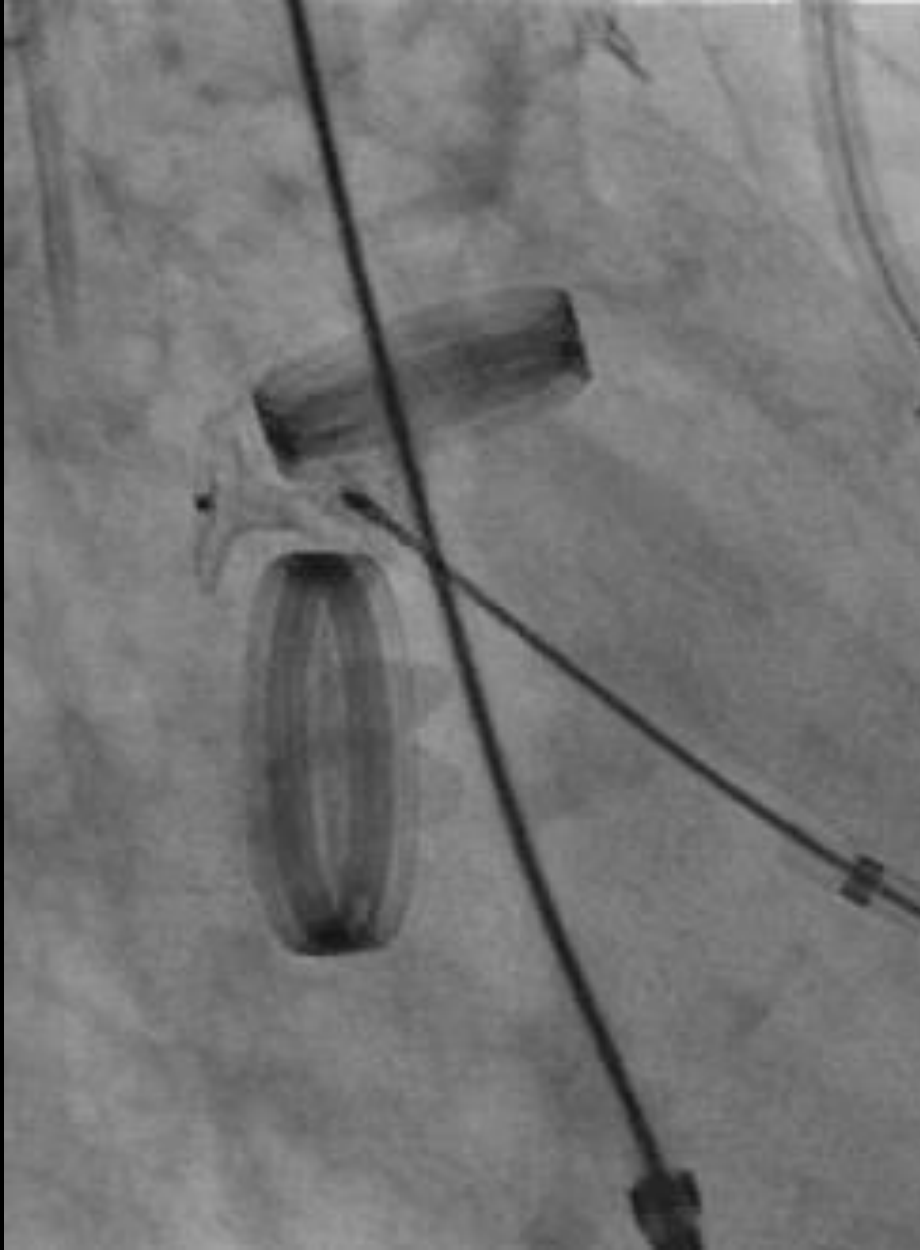
A = Waist Diameter

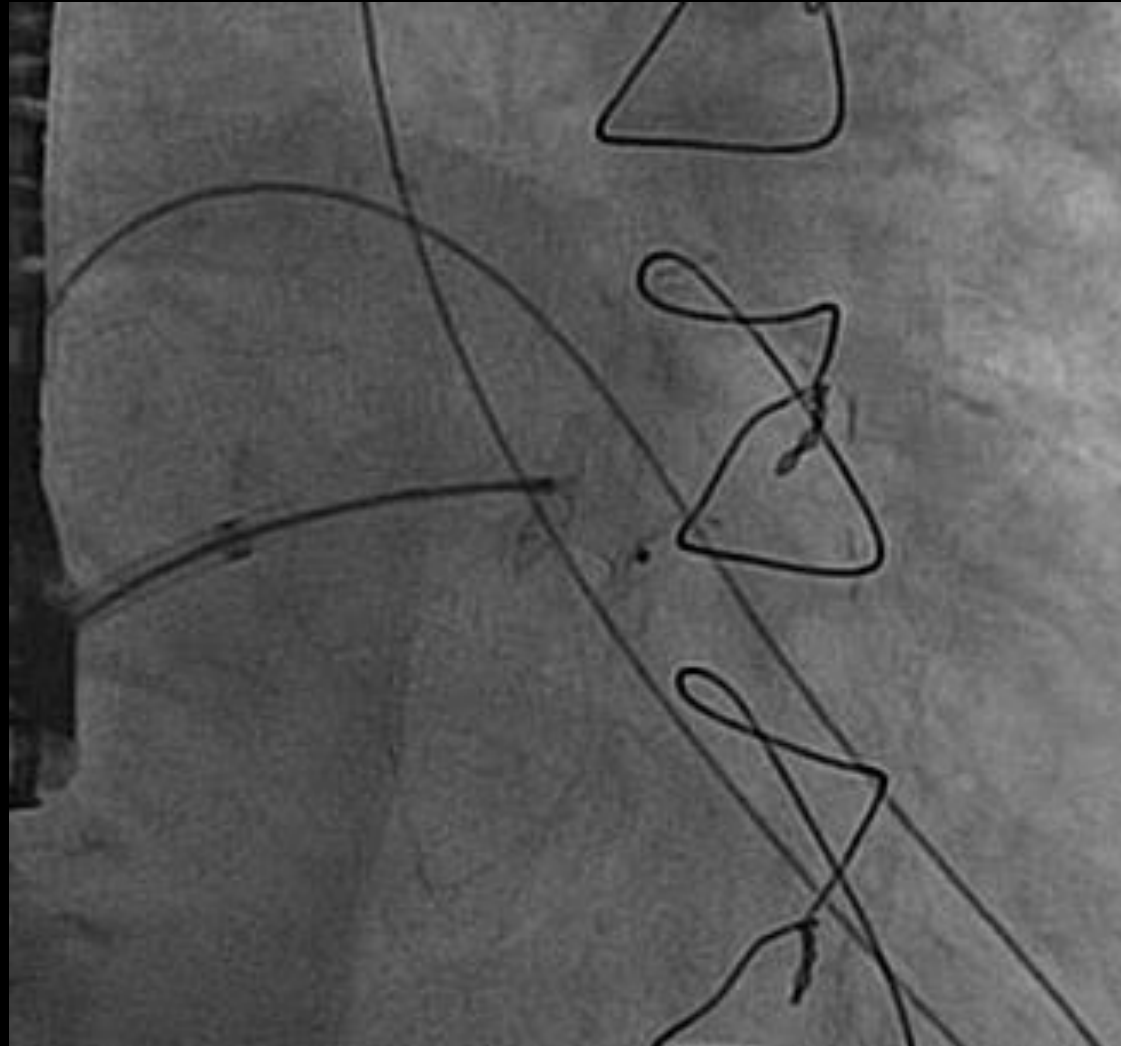
B = Waist Length

C = Disc Diameter

Device Size/ Waist Diameter (mm)	Sheath Size	Device Critical Dimensions (mm)	
4	5 F	Disc Dia. Waist Length	Waist + 5 7
6 to 10	6 F	Disc Dia. Waist Length	Waist + 8 7
12	7 F	Disc Dia. Waist Length	Waist + 8 7
14 to 16	8 F	Disc Dia. Waist Length	Waist + 8 7
18	9 F	RDisc Dia. Waist Length	Waist + 8 7

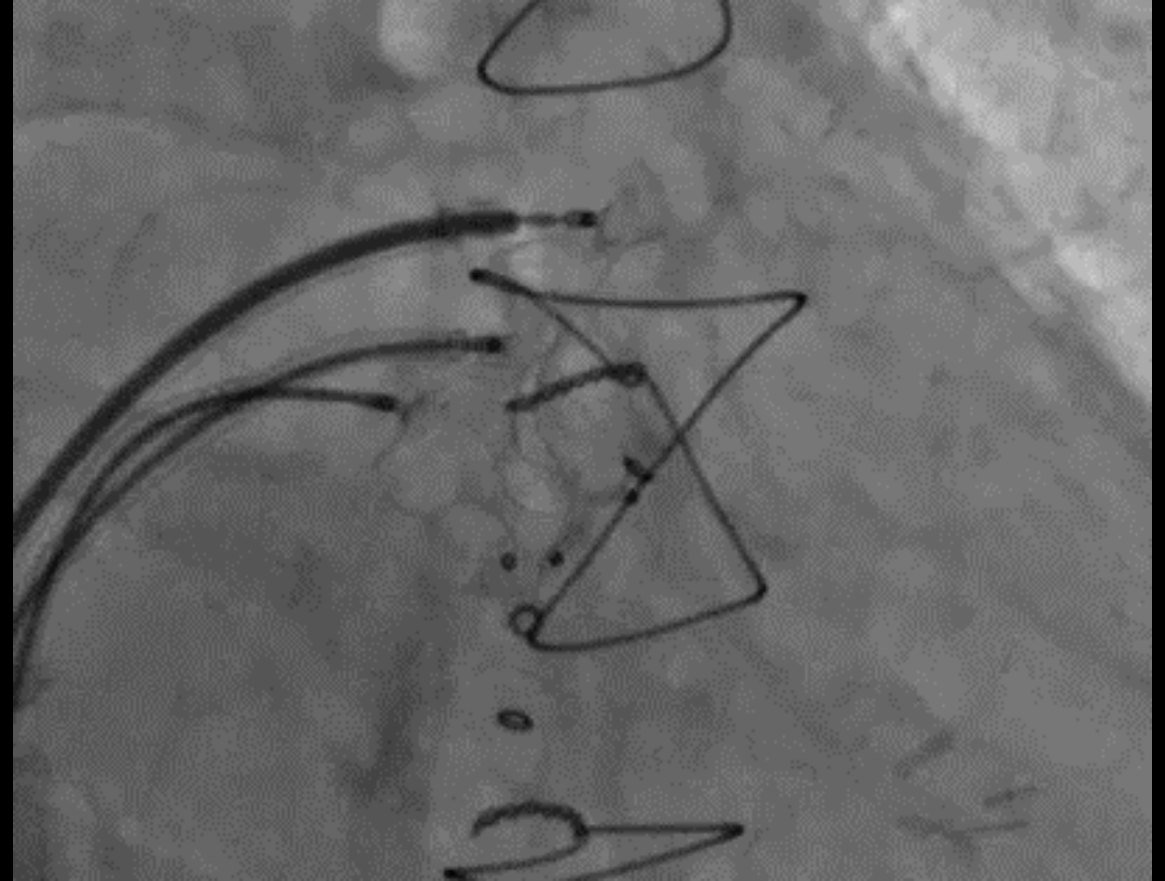
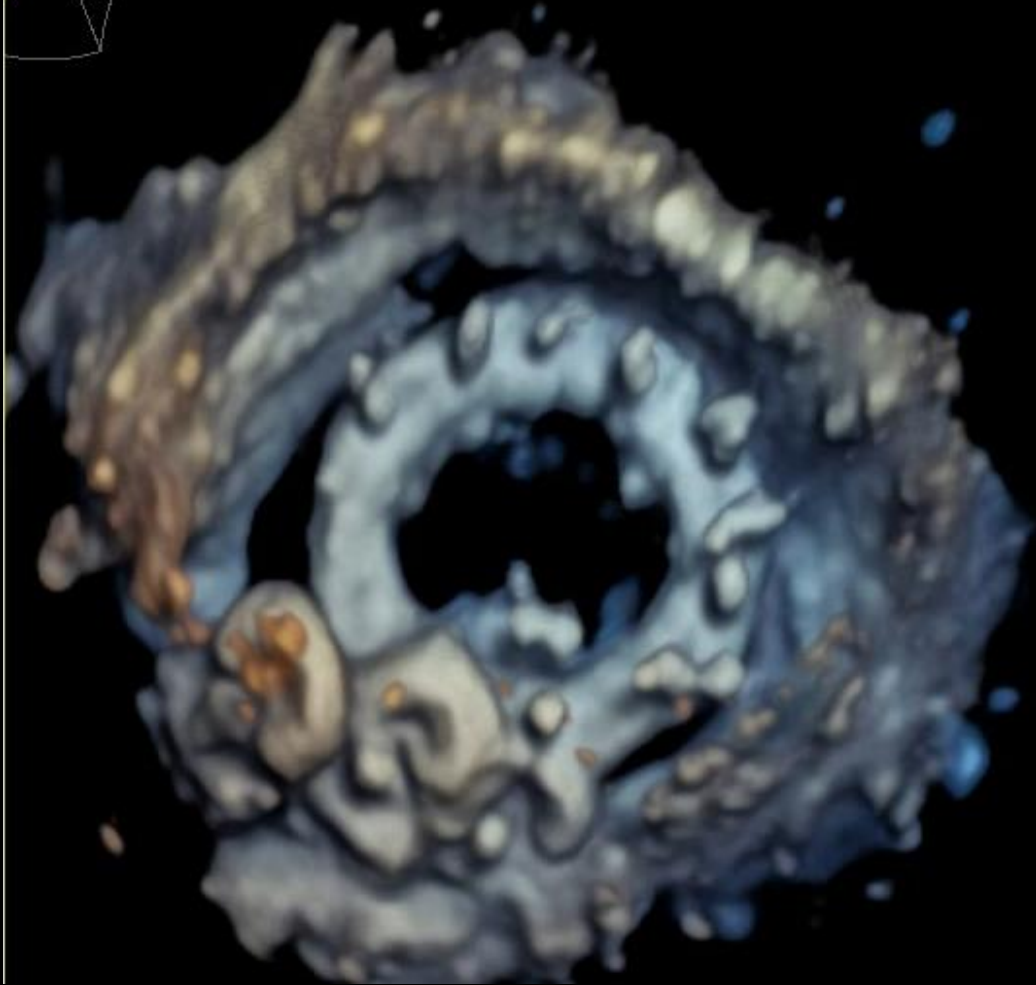
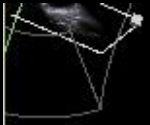
2 prothèses VSD n°4 et n°6





3 VSD

S Hascoet N Combes J Van Rothem Clinique pasteur Toulouse



Occlutech PLD Occluder

- Marquage CE fin 2014

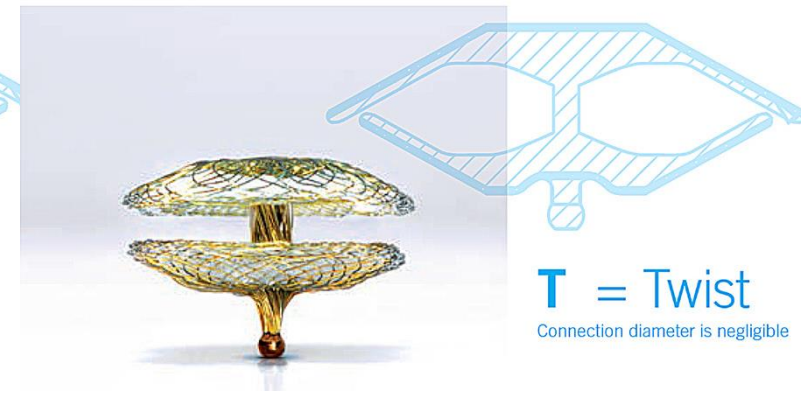
- Carré 3 à 7 mm dans 5 à 7F



Square



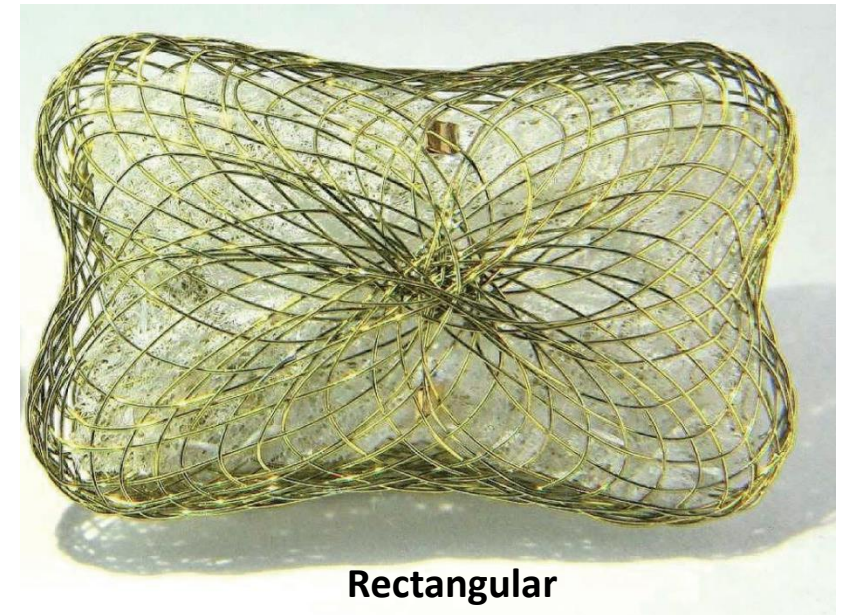
W = Waist



T = Twist

Connection diameter is negligible

- rectangle 4x2 12 x5 5-8F

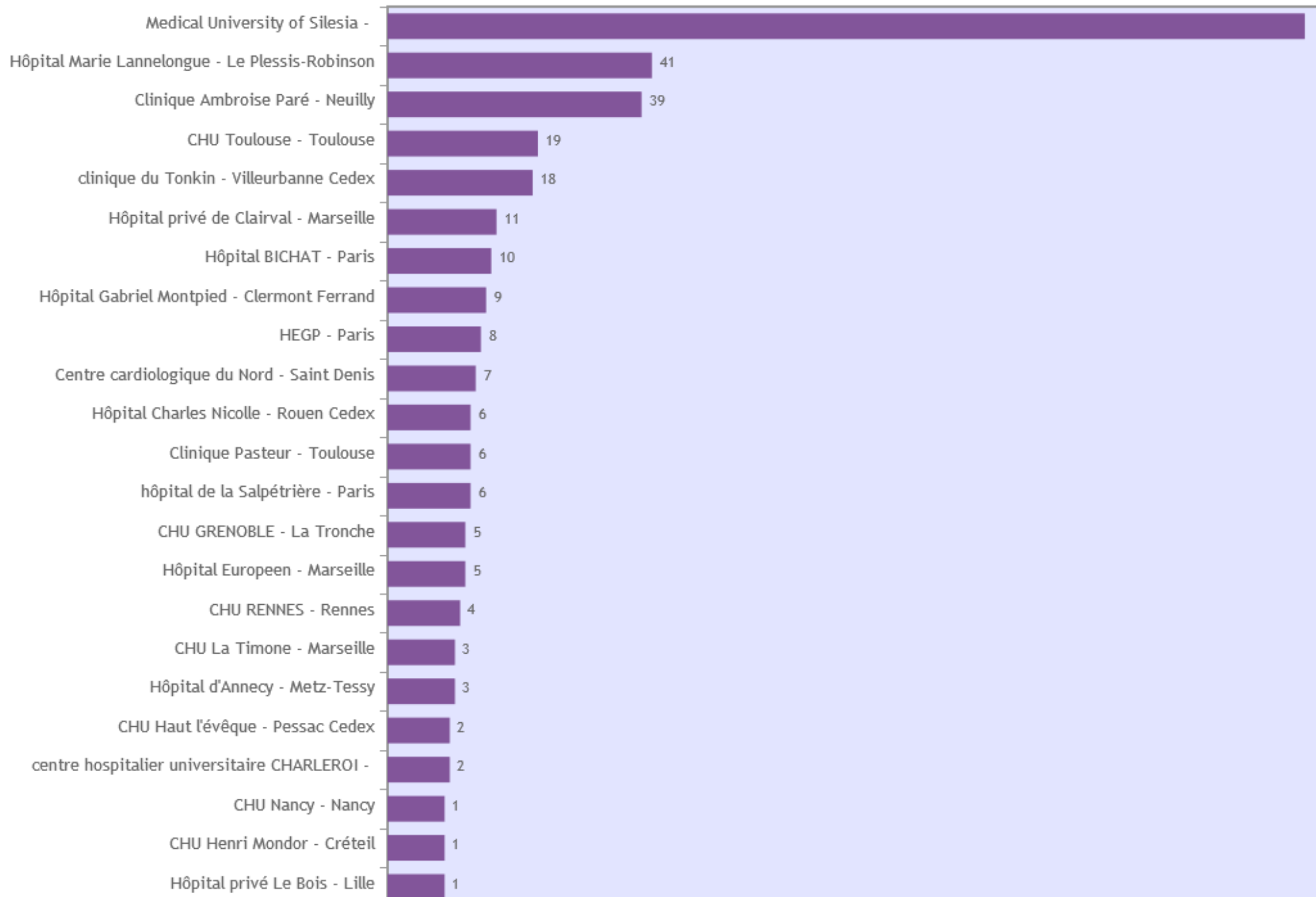


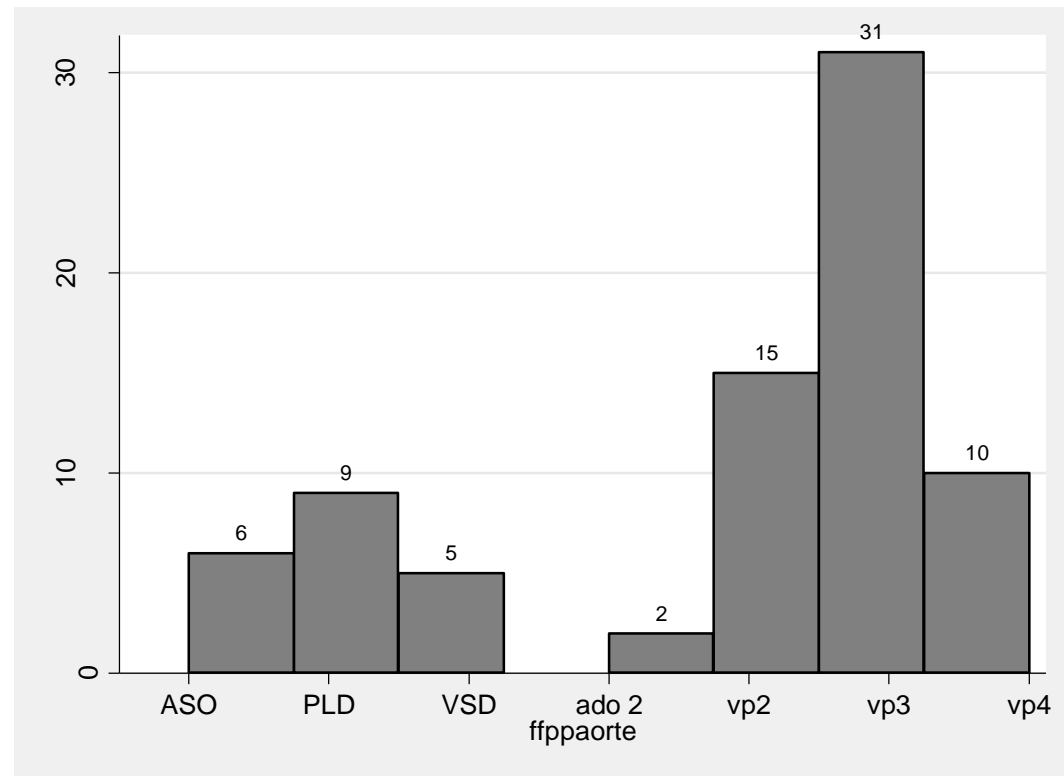
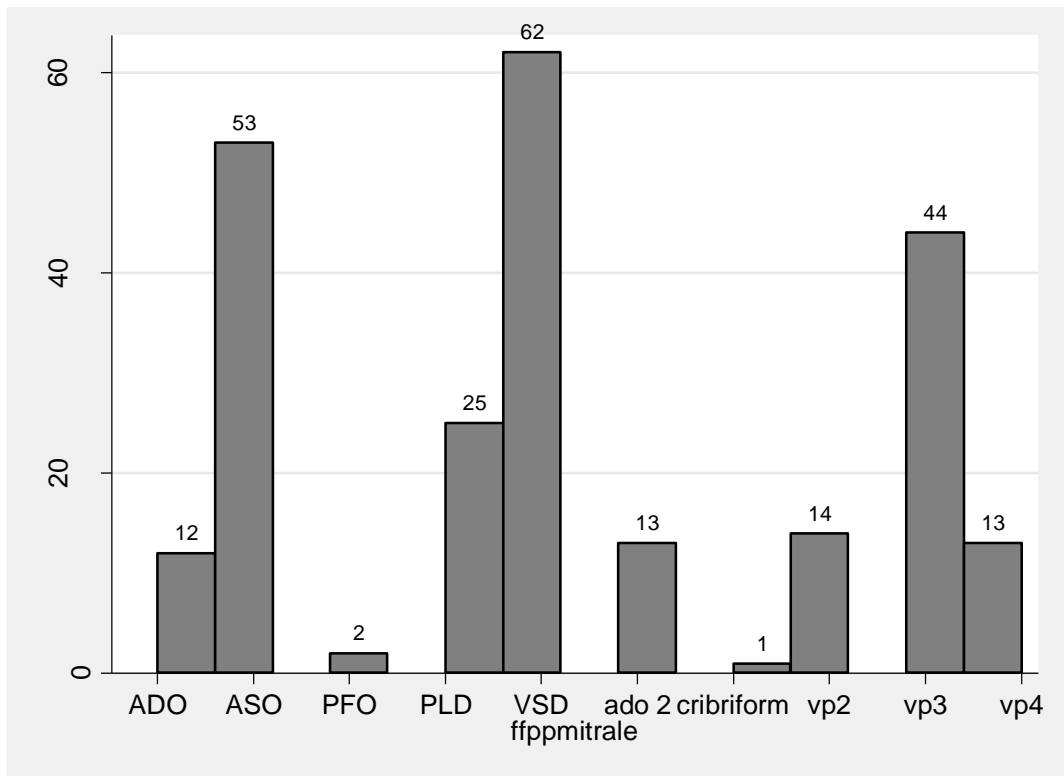
Rectangular

Two PET patches
One in each disc

Les données cliniques : observatoire FFPP

NOMBRE TOTAL D'INCLUSIONS FFPP : 374





Éléments décisionnels

Anatomie – largeur du défaut

Taille gaine

Type valve

Expériences précédentes de l'opérateur

Remboursement – coût

Take-home message

Prothèse off-label et/ou non remboursée

Vaste panel de prothèse => pas de prothèse idéale

Avis d'expert / « cuisine locale »

Peu d'evidence based medicine => intérêt du registre FFPP



© Successa Mes / ADMP, Paris, 2015.



Registre FFPP

s.hascoet@hml.fr b.gerardin@hml.fr f.lecerf@hml.fr

journée FFPP: HML 15 mars 2018

Sébastien Hascoët, *Cardiologie pédiatrique et congénitale, Hôpital Marie Lannelongue*