



Cata' Suisse

GRCI, Paris
St. Nicolas 2018



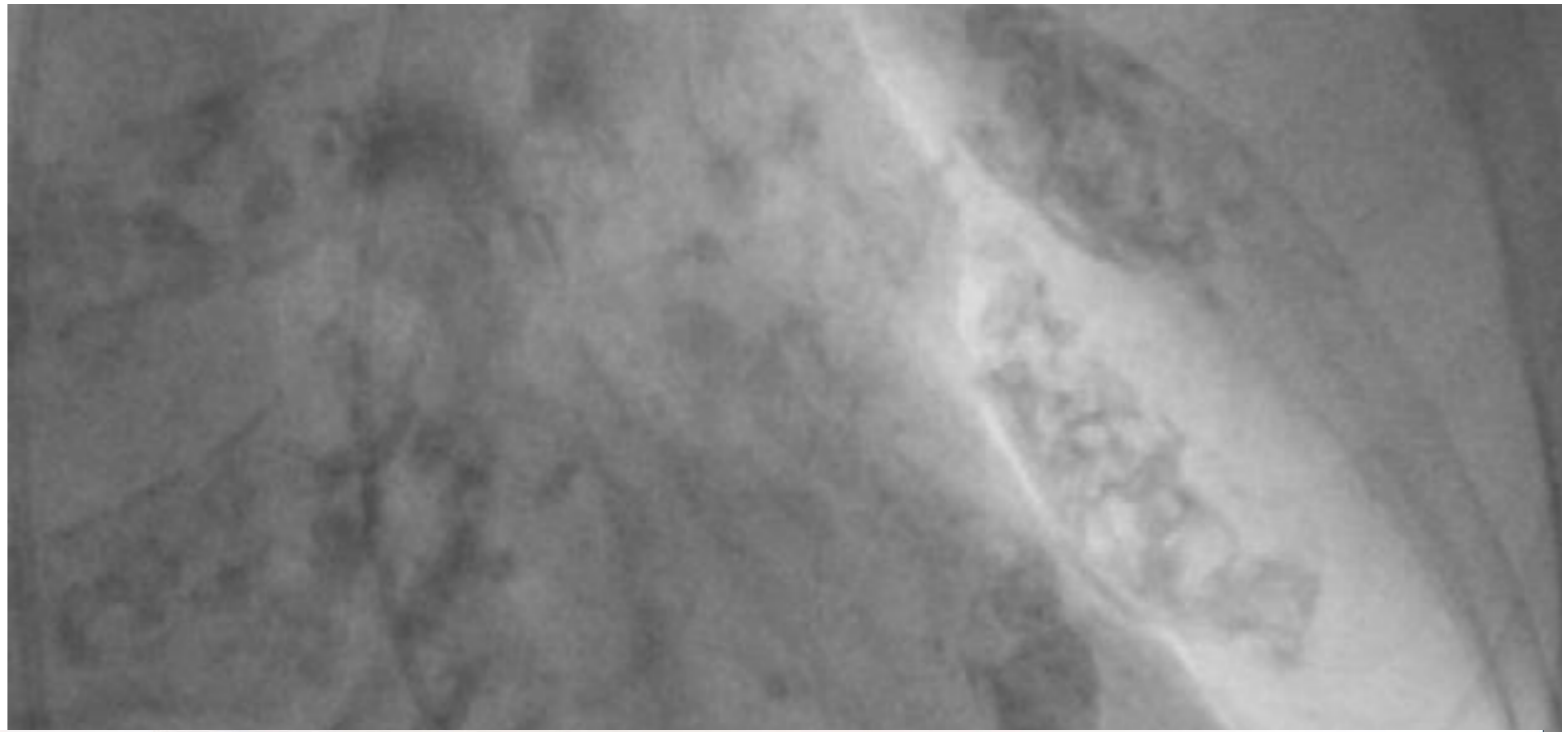
♀ 84 ans venant pour lx d'une sténose aortique symptomatique (AP CCS 3, Dyspnée NYHA II), FRCV: ancien tabagisme, HTA

Euroscore 19%, Poids 43 kg/Taille 1.56m



Passage de la valve avec
AL 1 4Fr et guide Terumo
0.035" droit 260 cm

Transcatheterisation pour
Pig 4Fr





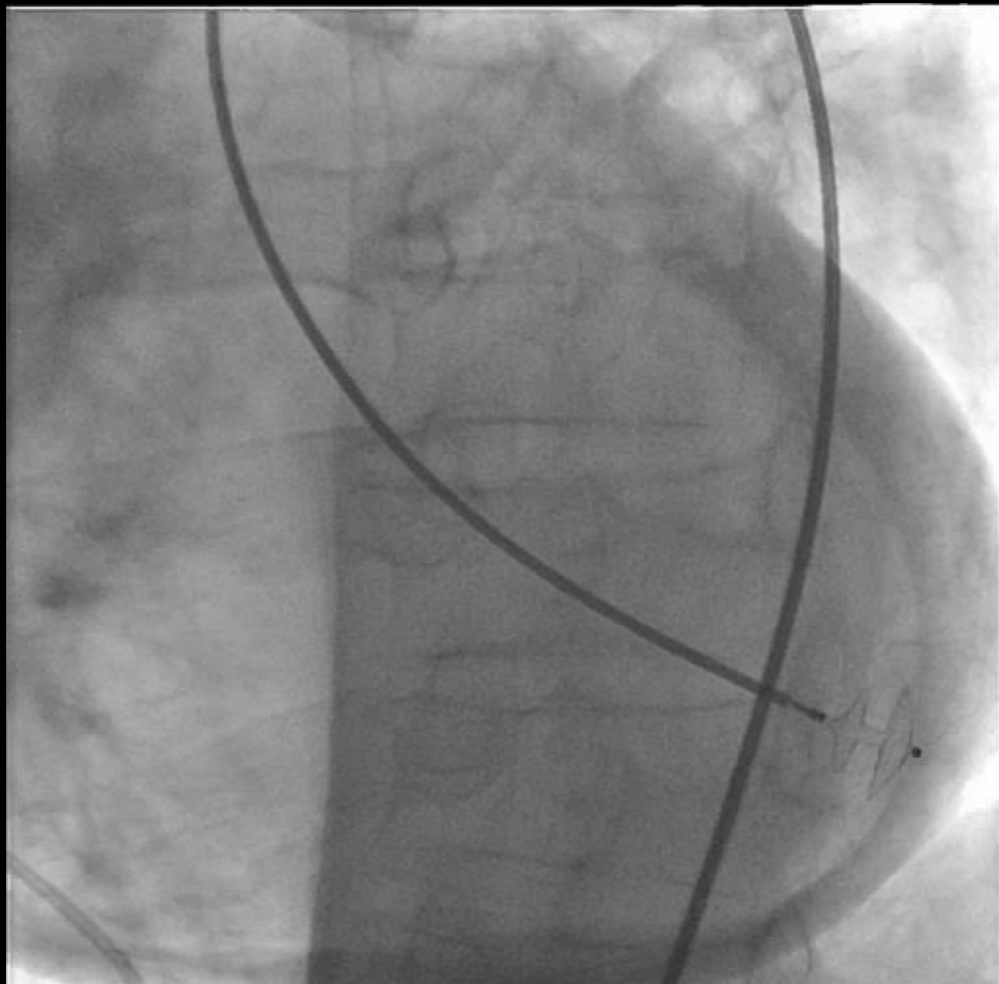
Qu'est-ce qu'on fait?



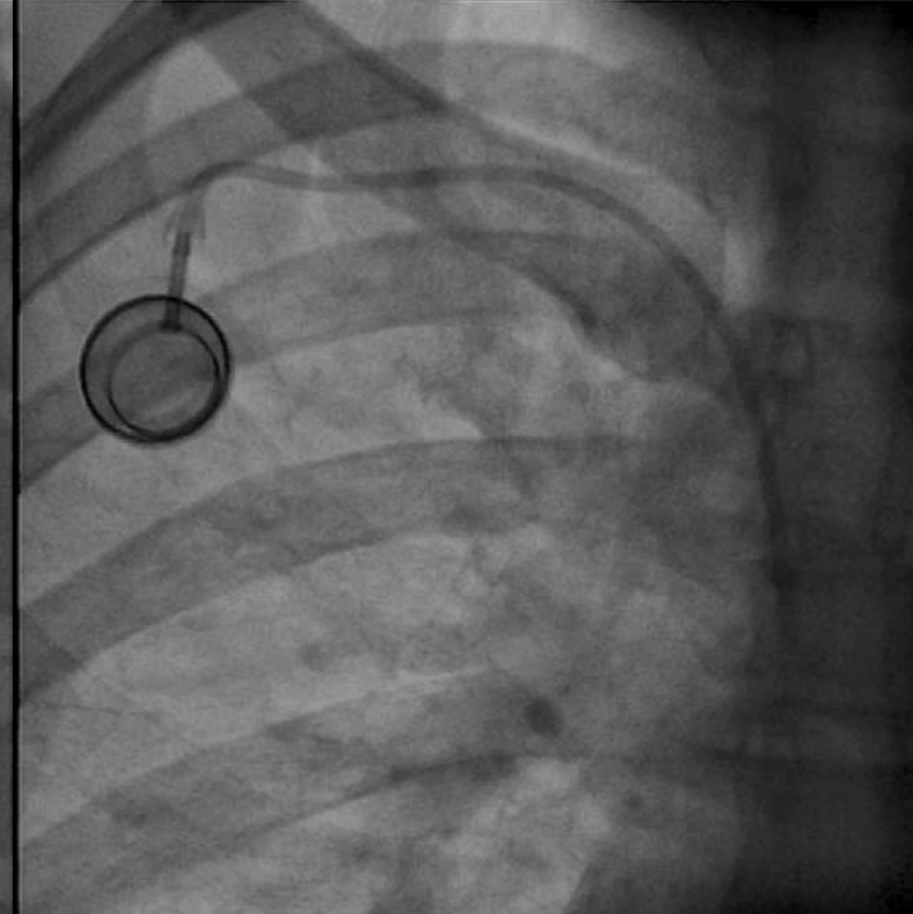
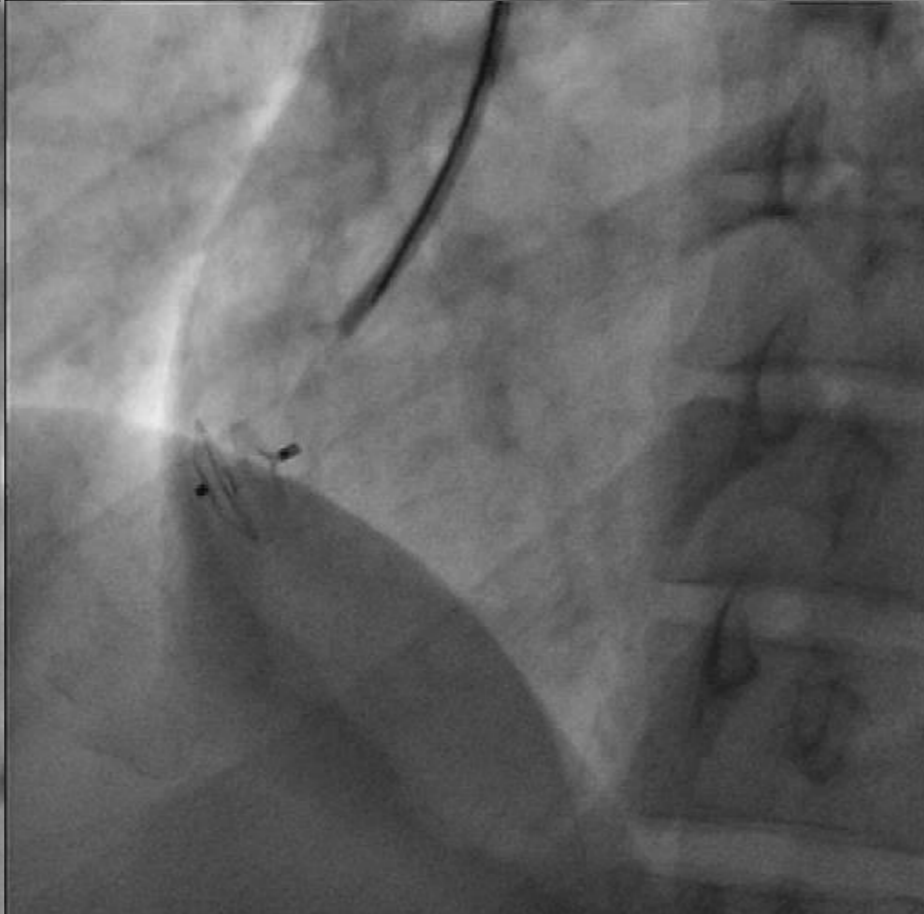
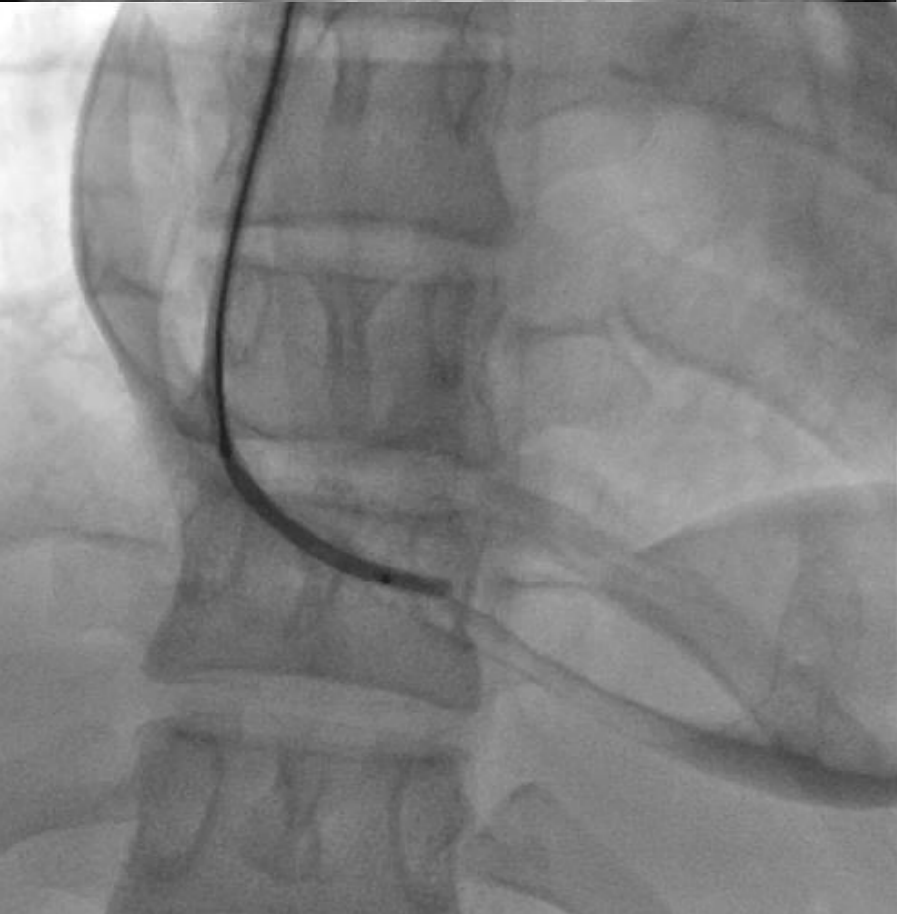
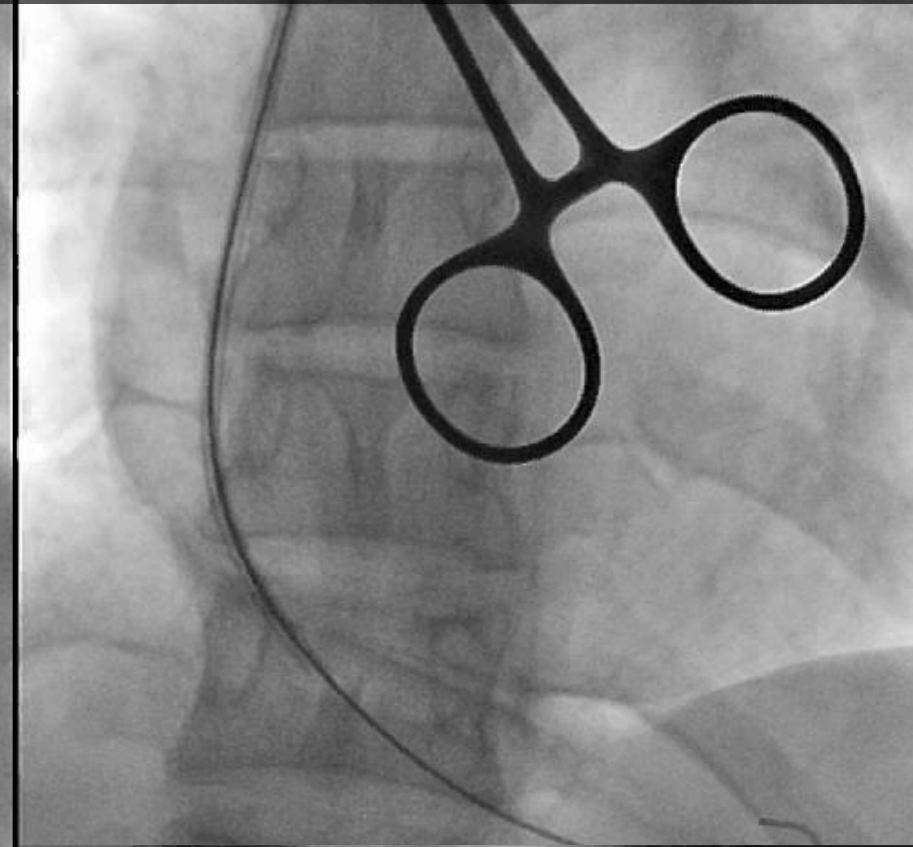
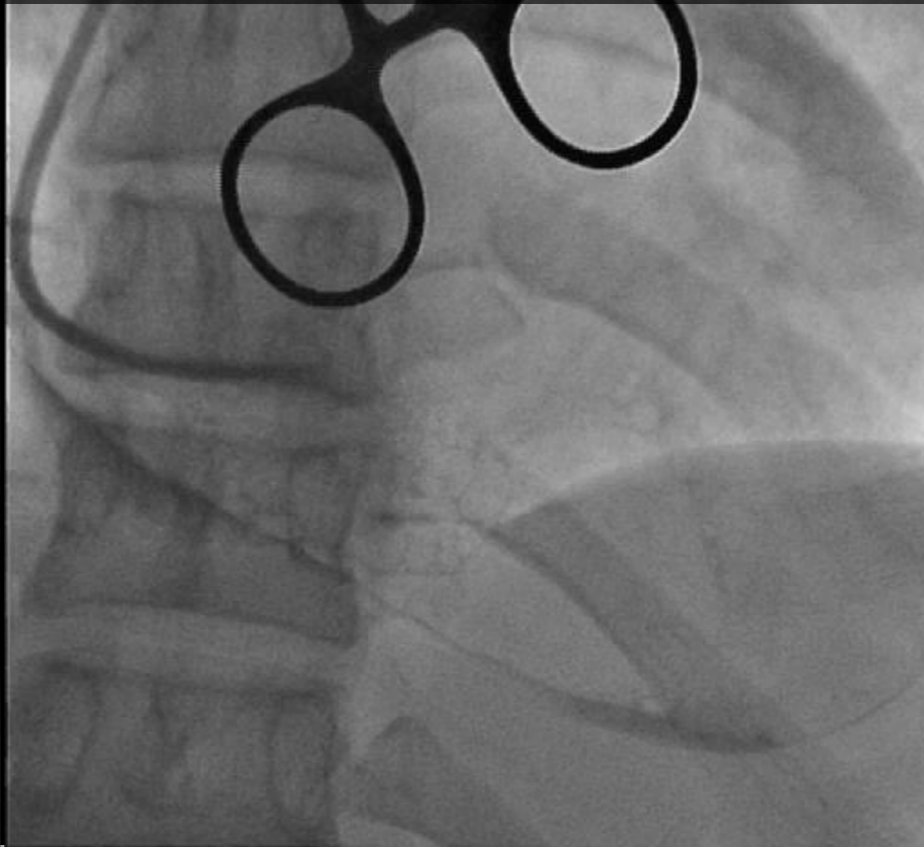
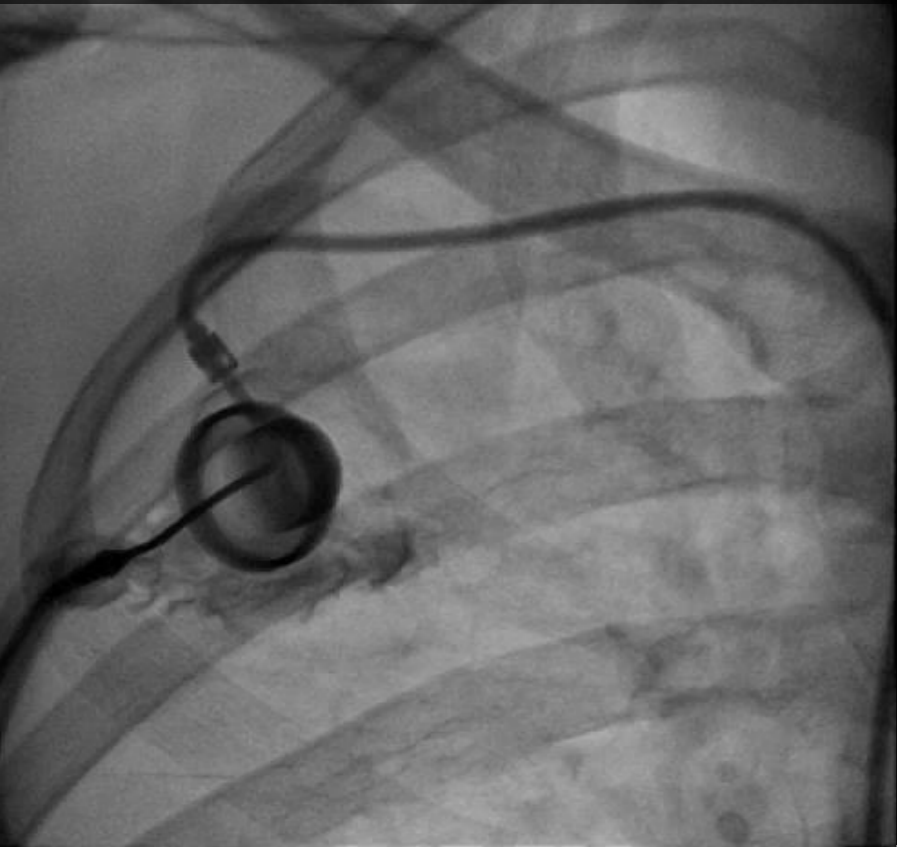
St. Nicolas
+
Bernhard Meier
=
St. Bernhard



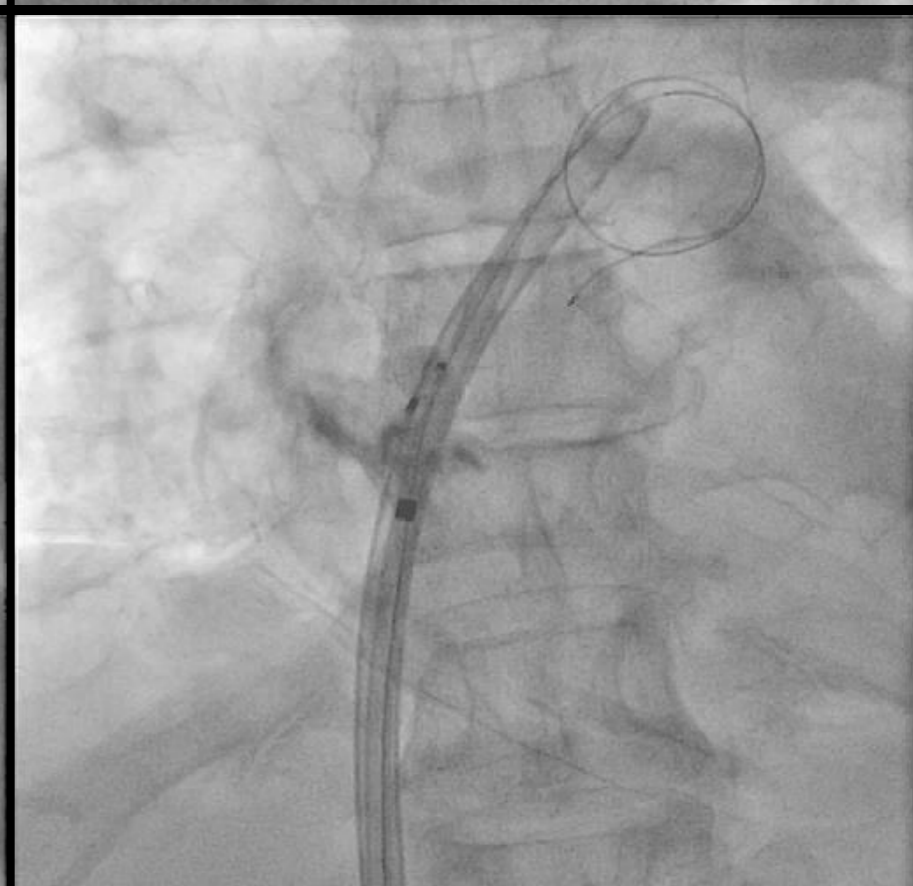
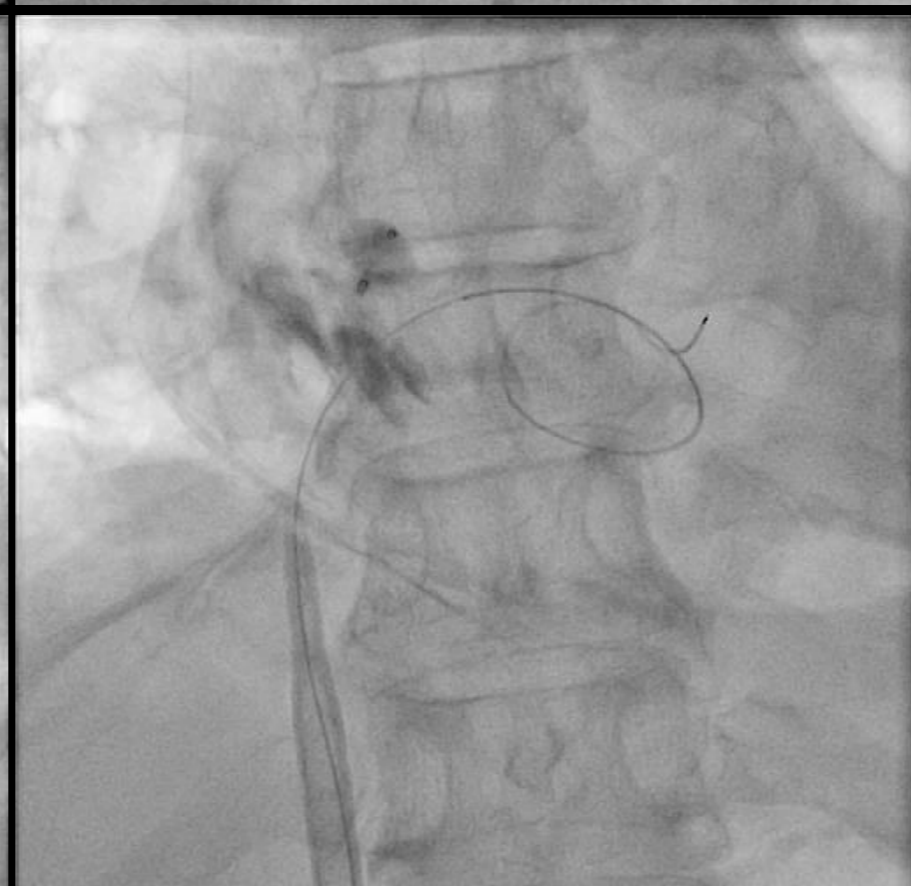
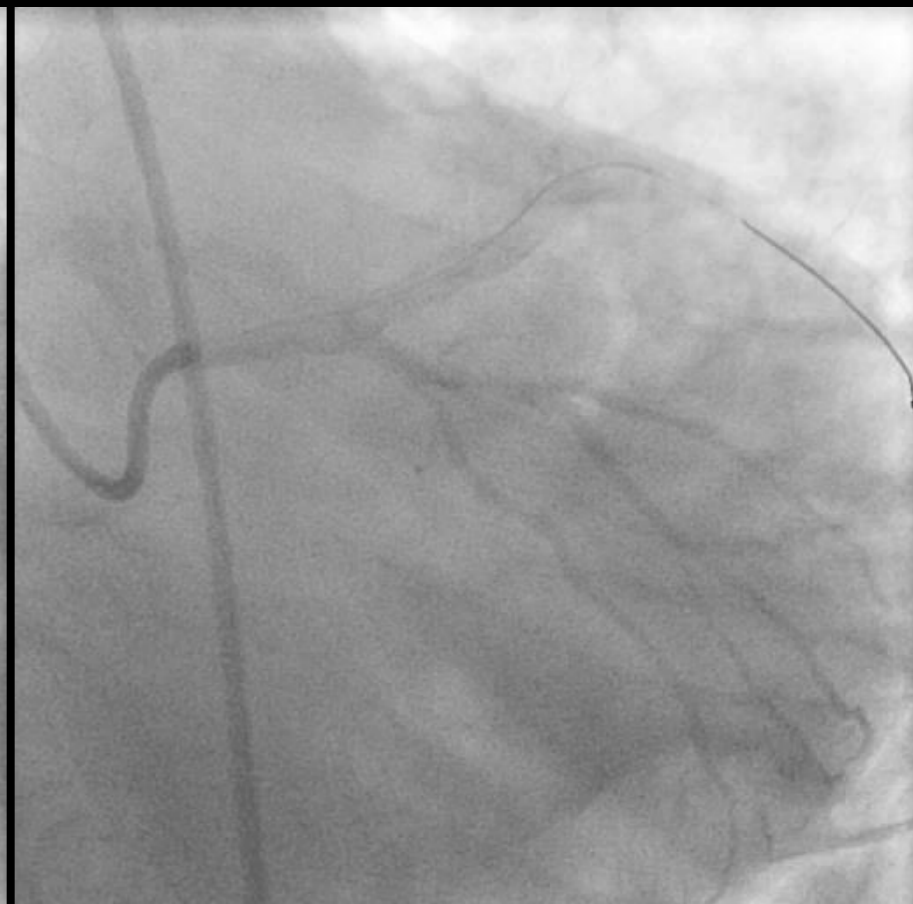
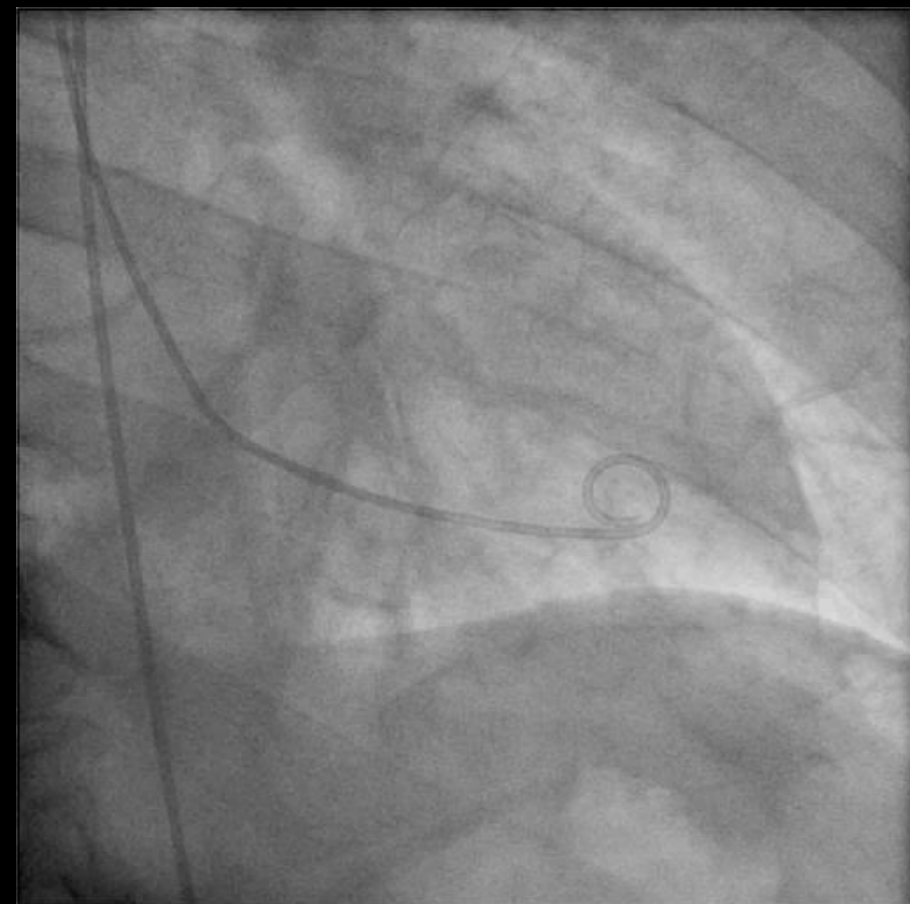
#1 Biopsie ventriculaire gauche chez patient de 69 ans cardiomyopathie dilatée et douleurs thoraciques intenses après retrait du biotome



#2 Patiente de 38 ans avec AdenoCA du rectum
Port-a-Cath
Douleurs thoraciques sévères pendant chimiothérapie



#3 Un touriste de 55 ans et de passage avec un choc cardiogène et besoin d'assistance (TandemHeart)





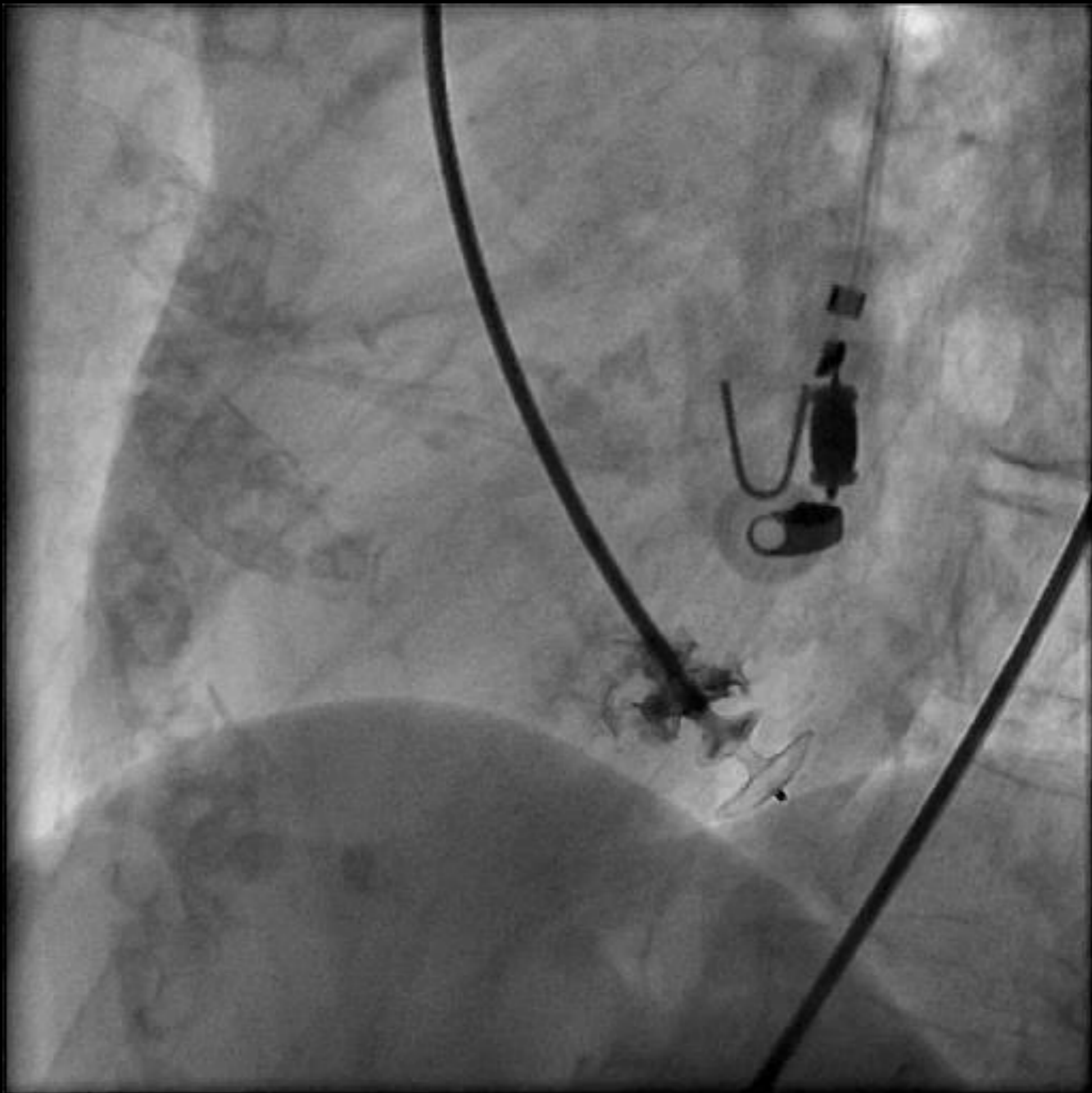
A nous, maintenant!

A fluoroscopic image showing a catheter and a guide wire. The catheter is a thin, dark line that curves through a vessel. The guide wire is a thicker, dark line that also curves through the vessel, crossing the catheter. The background is a light, grainy texture, likely representing the vessel wall or surrounding tissue. The catheter and guide wire are positioned in a way that suggests they are being used for a minimally invasive procedure.

MP 7Fr et guide Amplatzer ES 0.035"



Amplatzer Septal Occluder 4mm ASD



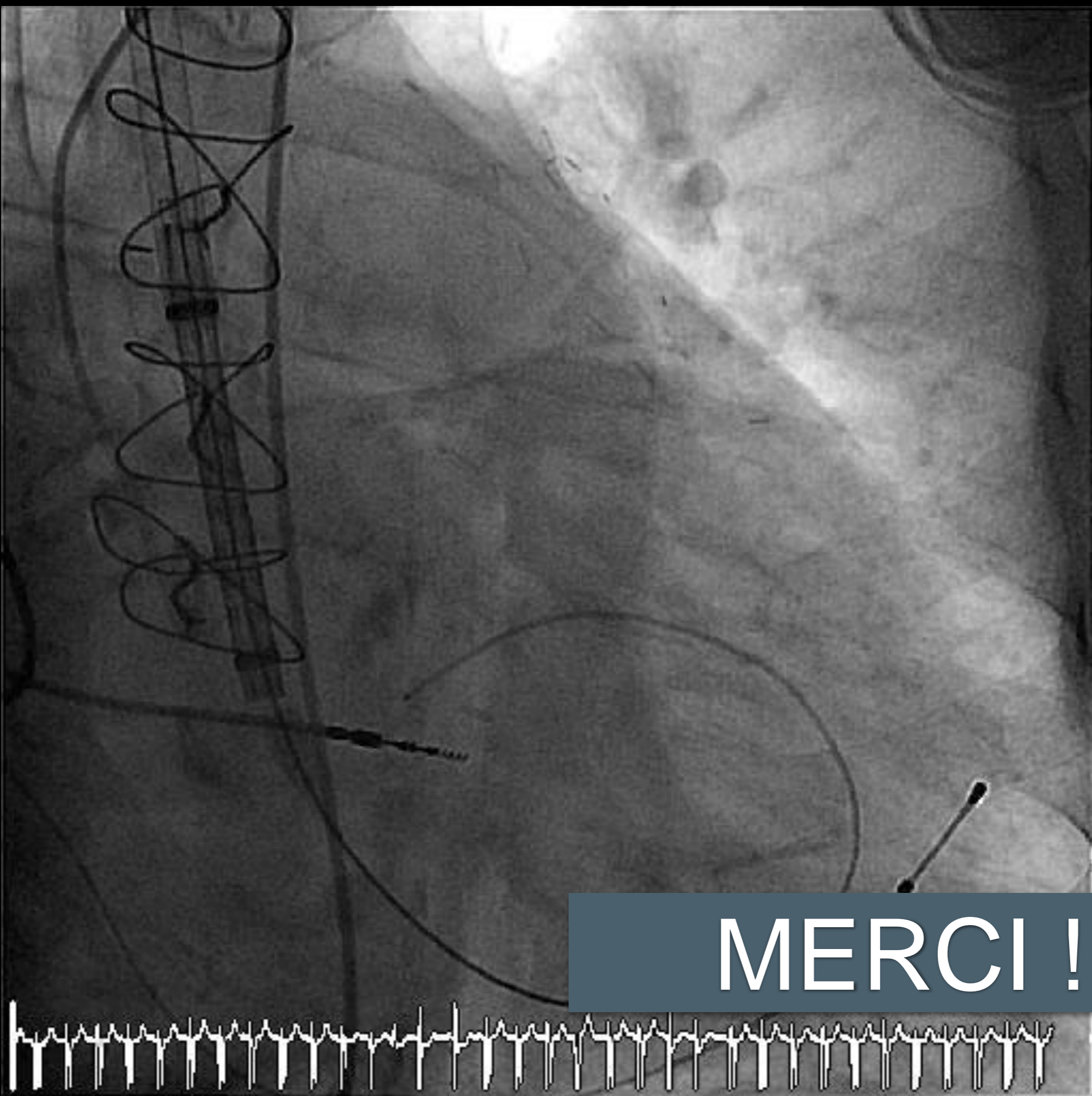


En cas de perforation, laissez le cath en place !

parce que cela:

- ferme le trou et diminue le saignement pendant que tu bricoles
- permet l'aspiration du sang
- maintien l'accès au trou pour une fermeture percutanée





MERCI !